

GAPDH Antibody (monoclonal) (M03)

Mouse monoclonal antibody raised against a partial recombinant GAPDH.
Catalog # AT2152a

Product Information

Application	WB, IP, E
Primary Accession	P04406
Other Accession	NM_002046
Reactivity	Human
Host	Mouse
Clonality	monoclonal
Isotype	IgG1 Kappa
Clone Names	1G5
Calculated MW	36053

Additional Information

Gene ID	2597
Other Names	Glyceraldehyde-3-phosphate dehydrogenase, GAPDH, Peptidyl-cysteine S-nitrosylase GAPDH, 2699-, GAPDH, GAPD
Target/Specificity	GAPDH (NP_002037, 226 a.a. ~ 335 a.a) partial recombinant protein with GST tag. MW of the GST tag alone is 26 KDa.
Dilution	WB~~1:500~1000 IP~~N/A E~~N/A
Format	Clear, colorless solution in phosphate buffered saline, pH 7.2 .
Storage	Store at -20°C or lower. Aliquot to avoid repeated freezing and thawing.
Precautions	GAPDH Antibody (monoclonal) (M03) is for research use only and not for use in diagnostic or therapeutic procedures.

Background

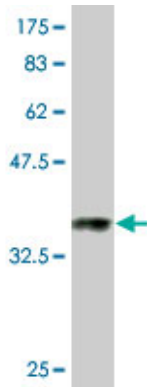
The product of this gene catalyzes an important energy-yielding step in carbohydrate metabolism, the reversible oxidative phosphorylation of glyceraldehyde-3-phosphate in the presence of inorganic phosphate and nicotinamide adenine dinucleotide (NAD). The enzyme exists as a tetramer of identical chains. Many pseudogenes similar to this locus are present in the human genome.

References

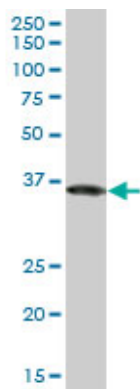
Inhibition of glyceraldehyde-3-phosphate dehydrogenase activity by antibodies present in the cerebrospinal fluid of patients with multiple sclerosis. K?lln J, et al. J Immunol, 2010 Aug 1. PMID 20610654. Proteome

analysis of the thalamus and cerebrospinal fluid reveals glycolysis dysfunction and potential biomarkers candidates for schizophrenia. Martins-de-Souza D, et al. J Psychiatr Res, 2010 May 14. PMID 20471030. Sex-specific proteome differences in the anterior cingulate cortex of schizophrenia. Martins-de-Souza D, et al. J Psychiatr Res, 2010 Apr 8. PMID 20381070. Identification of melanoma antigens using a Serological Proteome Approach (SERPA). Suzuki A, et al. Cancer Genomics Proteomics, 2010 Jan-Feb. PMID 20181627. siah-1 Protein is necessary for high glucose-induced glyceraldehyde-3-phosphate dehydrogenase nuclear accumulation and cell death in Muller cells. Yego EC, et al. J Biol Chem, 2010 Jan 29. PMID 19940145.

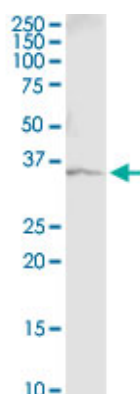
Images



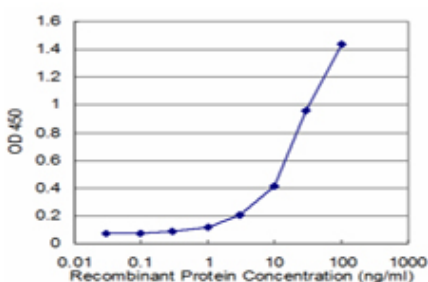
Antibody Reactive Against Recombinant Protein. Western Blot detection against Immunogen (37.84 KDa) .



GAPDH monoclonal antibody (M03), clone 1G5. Western Blot analysis of GAPDH expression in HeLa ((Cat # AT2152a)



Immunoprecipitation of GAPDH transfected lysate using anti-GAPDH monoclonal antibody and Protein A Magnetic Bead ([U0007](#)), and immunoblotted with GAPDH MaxPab rabbit polyclonal antibody.



Detection limit for recombinant GST tagged GAPDH is approximately 1 ng/ml as a capture antibody.

Please note: All products are 'FOR RESEARCH USE ONLY. NOT FOR USE IN DIAGNOSTIC OR THERAPEUTIC PROCEDURES'.