

## GAS2 Antibody (monoclonal) (M01)

Mouse monoclonal antibody raised against a partial recombinant GAS2.

Catalog # AT2155a

### Product Information

---

<b>Application</b>	WB, IF, E
<b>Primary Accession</b>	<a href="#">O43903</a>
<b>Other Accession</b>	<a href="#">NM_005256</a>
<b>Reactivity</b>	Human, Mouse
<b>Host</b>	mouse
<b>Clonality</b>	monoclonal
<b>Isotype</b>	IgG2a Kappa
<b>Clone Names</b>	4E12
<b>Calculated MW</b>	34945

### Additional Information

---

<b>Gene ID</b>	2620
<b>Other Names</b>	Growth arrest-specific protein 2, GAS-2, GAS2
<b>Target/Specificity</b>	GAS2 (NP_005247, 1 a.a. ~ 110 a.a) partial recombinant protein with GST tag. MW of the GST tag alone is 26 KDa.
<b>Dilution</b>	WB~~1:500~1000 IF~~1:50~200 E~~N/A
<b>Format</b>	Clear, colorless solution in phosphate buffered saline, pH 7.2 .
<b>Storage</b>	Store at -20°C or lower. Aliquot to avoid repeated freezing and thawing.
<b>Precautions</b>	GAS2 Antibody (monoclonal) (M01) is for research use only and not for use in diagnostic or therapeutic procedures.

### Background

---

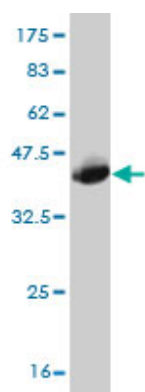
The protein encoded by this gene is a caspase-3 substrate that plays a role in regulating microfilament and cell shape changes during apoptosis. It can also modulate cell susceptibility to p53-dependent apoptosis by inhibiting calpain activity. Multiple alternatively spliced variants, encoding the same protein, have been identified.

### References

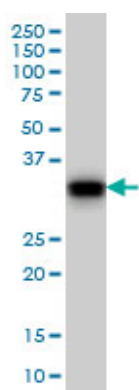
---

1.p53-dependent translational control of senescence and transformation via 4E-BPs.Petroulakis E, Parsyan A, Dowling RJ, LeBacquer O, Martineau Y, Bidinosti M, Larsson O, Alain T, Rong L, Mamane Y, Paquet M, Furic L, Topisirovic I, Shahbazian D, Livingstone M, Costa-Mattioli M, Teodoro JG, Sonenberg N.Cancer Cell. 2009 Nov

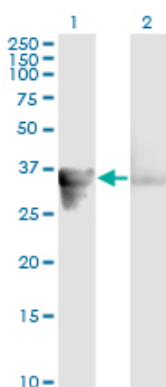
## Images



Antibody Reactive Against Recombinant Protein. Western Blot detection against Immunogen (37.84 KDa) .

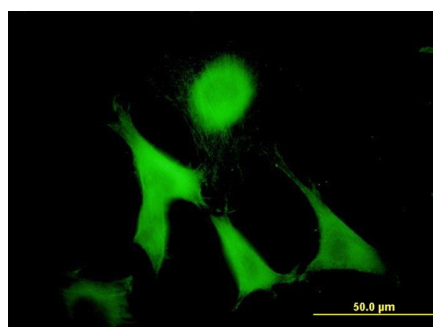


GAS2 monoclonal antibody (M01), clone 4E11 Western Blot analysis of GAS2 expression in NIH/3T3 ( (Cat # AT2155a )



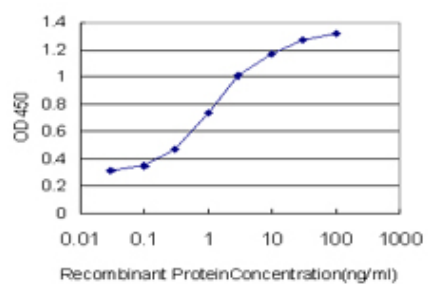
Western Blot analysis of GAS2 expression in transfected 293T cell line by GAS2 monoclonal antibody (M01), clone 4E11.

Lane 1: GAS2 transfected lysate(34.9 KDa).  
Lane 2: Non-transfected lysate.



Immunofluorescence of monoclonal antibody to GAS2 on NIH/3T3 cell. [antibody concentration 10 ug/ml]

Detection limit for recombinant GST tagged GAS2 is approximately 0.03ng/ml as a capture antibody.



Please note: All products are 'FOR RESEARCH USE ONLY. NOT FOR USE IN DIAGNOSTIC OR THERAPEUTIC PROCEDURES'.