

## GAS2L3 Antibody (monoclonal) (M01)

Mouse monoclonal antibody raised against a partial recombinant GAS2L3.

Catalog # AT2156a

### Product Information

---

Application	WB, E
Primary Accession	<a href="#">Q86XJ1</a>
Other Accession	<a href="#">BC043366</a>
Reactivity	Human
Host	mouse
Clonality	monoclonal
Isotype	IgG1 Kappa
Clone Names	1D4
Calculated MW	75214

### Additional Information

---

Gene ID	283431
Other Names	GAS2-like protein 3, Growth arrest-specific protein 2-like 3, GAS2L3
Target/Specificity	GAS2L3 (AAH43366, 595 a.a. ~ 694 a.a) partial recombinant protein with GST tag. MW of the GST tag alone is 26 KDa.
Dilution	WB~~1:500~1000 E~~N/A
Format	Clear, colorless solution in phosphate buffered saline, pH 7.2 .
Storage	Store at -20°C or lower. Aliquot to avoid repeated freezing and thawing.
Precautions	GAS2L3 Antibody (monoclonal) (M01) is for research use only and not for use in diagnostic or therapeutic procedures.

### References

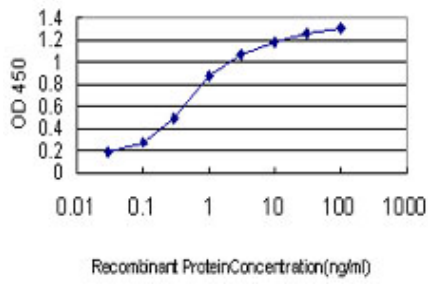
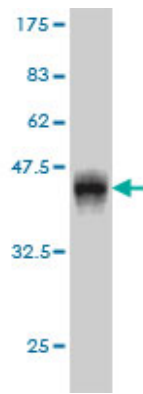
---

1.GAS2L3, a novel target gene of the dream complex, is required for proper cytokinesis and genomic stability.Wolter P, Schmitt K, Fackler M, Kremling H, Probst L, Hauser S, Gruss OJ, Gaubatz S.J Cell Sci. 2012 Feb 17. [Epub ahead of print]

### Images

---

Antibody Reactive Against Recombinant Protein.Western Blot detection against Immunogen (36.63 KDa) .



Detection limit for recombinant GST tagged GAS2L3 is approximately 0.03ng/ml as a capture antibody.

Please note: All products are 'FOR RESEARCH USE ONLY. NOT FOR USE IN DIAGNOSTIC OR THERAPEUTIC PROCEDURES'.