

## GDI1 Antibody (monoclonal) (M08)

Mouse monoclonal antibody raised against a full length recombinant GDI1.

Catalog # AT2187a

### Product Information

---

Application	WB, E
Primary Accession	<a href="#">P31150</a>
Other Accession	<a href="#">BC000317</a>
Reactivity	Human
Host	mouse
Clonality	monoclonal
Isotype	IgG2a Kappa
Clone Names	1H3
Calculated MW	50583

### Additional Information

---

Gene ID	2664
Other Names	Rab GDP dissociation inhibitor alpha, Rab GDI alpha, Guanosine diphosphate dissociation inhibitor 1, GDI-1, Oligophrenin-2, Protein XAP-4, GDI1, GDIL, OPHN2, RABGDIA, XAP4
Target/Specificity	GDI1 (AAH00317, 1 a.a. ~ 447 a.a) full-length recombinant protein with GST tag. MW of the GST tag alone is 26 KDa.
Dilution	WB~~1:500~1000 E~~N/A
Format	Clear, colorless solution in phosphate buffered saline, pH 7.2 .
Storage	Store at -20°C or lower. Aliquot to avoid repeated freezing and thawing.
Precautions	GDI1 Antibody (monoclonal) (M08) is for research use only and not for use in diagnostic or therapeutic procedures.

### Background

---

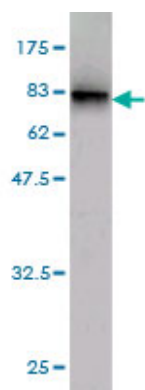
GDP dissociation inhibitors are proteins that regulate the GDP-GTP exchange reaction of members of the rab family, small GTP-binding proteins of the ras superfamily, that are involved in vesicular trafficking of molecules between cellular organelles. GDIs slow the rate of dissociation of GDP from rab proteins and release GDP from membrane-bound rabs. GDI1 is expressed primarily in neural and sensory tissues. Mutations in GDI1 have been linked to X-linked nonspecific mental retardation.

### References

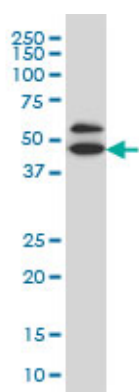
---

Sex-specific proteome differences in the anterior cingulate cortex of schizophrenia. Martins-de-Souza D, et al. J Psychiatr Res, 2010 Apr 8. PMID 20381070. Mutant prion protein expression is associated with an alteration of the Rab GDP dissociation inhibitor alpha (GDI)/Rab11 pathway. Massignan T, et al. Mol Cell Proteomics, 2010 Apr. PMID 19996123. GDI-1 preferably interacts with Rab10 in insulin-stimulated GLUT4 translocation. Chen Y, et al. Biochem J, 2009 Aug 13. PMID 19570034. [Relationship between the polymorphisms of GDI1, children NSMR and their intelligence in Qinba region] Zhang KJ, et al. Yi Chuan, 2008 May. PMID 18487148. Large-scale mapping of human protein-protein interactions by mass spectrometry. Ewing RM, et al. Mol Syst Biol, 2007. PMID 17353931.

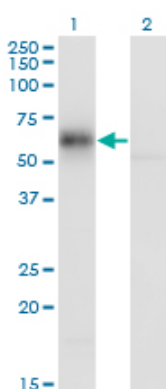
## Images



Antibody Reactive Against Recombinant Protein. Western Blot detection against Immunogen (74.91 KDa) .

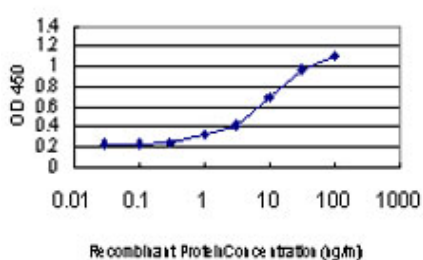


GDI1 monoclonal antibody (M08), clone 1H3 Western Blot analysis of GDI1 expression in IMR-32 ( Cat # AT2187a )



Western Blot analysis of GDI1 expression in transfected 293T cell line by GDI1 monoclonal antibody (M08), clone 1H3.

Lane 1: GDI1 transfected lysate (50.6 KDa).  
Lane 2: Non-transfected lysate.



Detection limit for recombinant GST tagged GDI1 is approximately 0.3 ng/ml as a capture antibody.

Please note: All products are 'FOR RESEARCH USE ONLY. NOT FOR USE IN DIAGNOSTIC OR THERAPEUTIC PROCEDURES'.