

# GGT1 Antibody (monoclonal) (M01)

Mouse monoclonal antibody raised against a partial recombinant GGT1.

Catalog # AT2197a

## Product Information

---

<b>Application</b>	WB, IHC, IP, E
<b>Primary Accession</b>	<a href="#">P19440</a>
<b>Other Accession</b>	<a href="#">NM_005265</a>
<b>Reactivity</b>	Human, Mouse
<b>Host</b>	mouse
<b>Clonality</b>	monoclonal
<b>Isotype</b>	IgG2a Kappa
<b>Clone Names</b>	1F9
<b>Calculated MW</b>	61410

## Additional Information

---

<b>Gene ID</b>	2678
<b>Other Names</b>	Gamma-glutamyltranspeptidase 1, GGT 1, Gamma-glutamyltransferase 1, Glutathione hydrolase 1, Leukotriene-C4 hydrolase, CD224, Gamma-glutamyltranspeptidase 1 heavy chain, Gamma-glutamyltranspeptidase 1 light chain, GGT1, GGT
<b>Target/Specificity</b>	GGT1 (NP_005256, 381 a.a. ~ 470 a.a) partial recombinant protein with GST tag. MW of the GST tag alone is 26 KDa.
<b>Dilution</b>	WB~~1:500~1000 IHC~~1:100~500 IP~~N/A E~~N/A
<b>Format</b>	Clear, colorless solution in phosphate buffered saline, pH 7.2 .
<b>Storage</b>	Store at -20°C or lower. Aliquot to avoid repeated freezing and thawing.
<b>Precautions</b>	GGT1 Antibody (monoclonal) (M01) is for research use only and not for use in diagnostic or therapeutic procedures.

## Background

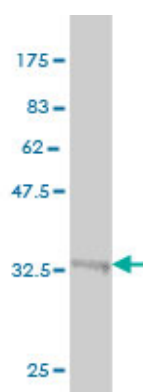
---

The enzyme encoded by this gene catalyzes the transfer of the glutamyl moiety of glutathione to a variety of amino acids and dipeptide acceptors. The enzyme is composed of a heavy chain and a light chain, which are derived from a single precursor protein, and is present in tissues involved in absorption and secretion. This enzyme is a member of the gamma-glutamyltransferase protein family, of which many members have not yet been fully characterized and some of which may represent pseudogenes. This gene is classified as type I gamma-glutamyltransferase. Multiple alternatively spliced variants, encoding the same protein, have been identified.

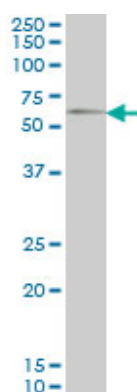
## References

1. Polymorphisms in ABCB11 and ATP8B1 Associated with Development of Severe Intrahepatic Cholestasis in Hodgkin's Lymphoma. Blackmore L, Knisely AS, Hartley JL, McKay K, Gissen P, Marcus R, Shawcross DL. *Journal of Clinical and Experimental Hepatology* (2012), <http://dx.doi.org/10.1016/j.jceh.2013.01.0052>. A Quantitative Proteomic Analysis Uncovers the Relevance of CUL3 in Bladder Cancer Aggressiveness. Grau L, Luque-Garcia JL, Gonzalez-Peramato P, Theodorescu D, Palou J, Fernandez-Gomez JM, Sanchez-Carbayo M. *PLoS One*. 2013;8(1):e53328. doi: 10.1371/journal.pone.0053328. Epub 2013 Jan 8. 3. Autocatalytic cleavage of human  $\gamma$ -glutamyl transpeptidase is highly dependent on N-glycosylation at asparagine 95. West MB, Wickham S, Quinalty LM, Pavlovicz RE, Li C, Hanigan MH. *J Biol Chem*. 2011 Jun 28. [Epub ahead of print] 4. Analysis of site-specific glycosylation of renal and hepatic  $\gamma$ -glutamyl transpeptidase from normal human tissue. West MB, Segu ZM, Feasley CL, Kang P, Klouckova I, Li C, Novotny MV, West CM, Mechref Y, Hanigan MH. *J Biol Chem*. 2010 Sep 17;285(38):29511-24. Epub 2010 Jul 9.

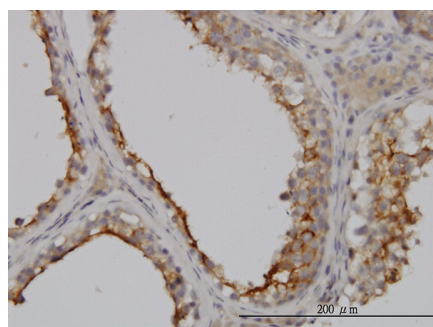
## Images



Antibody Reactive Against Recombinant Protein. Western Blot detection against Immunogen (35.64 kDa) .

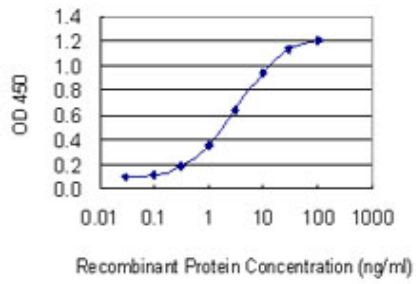
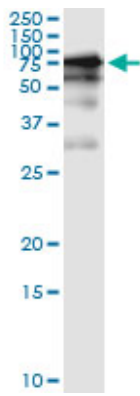


GGT1 monoclonal antibody (M01), clone 1F9 Western Blot analysis of GGT1 expression in NIH/3T3 (Cat # AT2197a)



Immunoperoxidase of monoclonal antibody to GGT1 on formalin-fixed paraffin-embedded human testis. [antibody concentration 3 ug/ml]

Immunoprecipitation of GGT1 transfected lysate using anti-GGT1 monoclonal antibody and Protein A Magnetic Bead ([U0007](#)), and immunoblotted with GGT1 MaxPab rabbit polyclonal antibody.



Detection limit for recombinant GST tagged GGT1 is 0.1 ng/ml as a capture antibody.

Please note: All products are 'FOR RESEARCH USE ONLY. NOT FOR USE IN DIAGNOSTIC OR THERAPEUTIC PROCEDURES'.