

# GLB1 Antibody (monoclonal) (M01)

Mouse monoclonal antibody raised against a partial recombinant GLB1.

Catalog # AT2205a

## Product Information

---

<b>Application</b>	WB, IP
<b>Primary Accession</b>	<a href="#">P16278</a>
<b>Other Accession</b>	<a href="#">NM_000404</a>
<b>Reactivity</b>	Human
<b>Host</b>	mouse
<b>Clonality</b>	monoclonal
<b>Isotype</b>	IgG2a Kappa
<b>Clone Names</b>	6E8
<b>Calculated MW</b>	76075

## Additional Information

---

<b>Gene ID</b>	2720
<b>Other Names</b>	Beta-galactosidase, Acid beta-galactosidase, Lactase, Elastin receptor 1, GLB1, ELNR1
<b>Target/Specificity</b>	GLB1 (NP_000395, 578 a.a. ~ 677 a.a) partial recombinant protein with GST tag. MW of the GST tag alone is 26 KDa.
<b>Dilution</b>	WB~~1:500~1000 IP~~N/A
<b>Format</b>	Clear, colorless solution in phosphate buffered saline, pH 7.2 .
<b>Storage</b>	Store at -20°C or lower. Aliquot to avoid repeated freezing and thawing.
<b>Precautions</b>	GLB1 Antibody (monoclonal) (M01) is for research use only and not for use in diagnostic or therapeutic procedures.

## Background

---

This gene encodes beta-galactosidase-1, a lysosomal enzyme that hydrolyzes the terminal beta-galactose from ganglioside substrates and other glycoconjugates. Defects in this gene are the cause of GM1-gangliosidosis and Morquio B syndrome. Multiple transcript variants encoding different isoforms have been found for this gene.

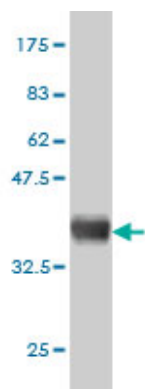
## References

---

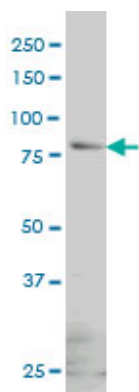
Personalized smoking cessation: interactions between nicotine dose, dependence and quit-success genotype score. Rose JE, et al. Mol Med, 2010 Jul-Aug. PMID 20379614. Multiple common variants for celiac disease

influencing immune gene expression. Dubois PC, et al. Nat Genet, 2010 Apr. PMID 20190752. Role of the elastin receptor complex (S-Gal/Cath-A/Neu-1) in skin repair and regeneration. Antonicelli F, et al. Wound Repair Regen, 2009 Sep-Oct. PMID 19769716. GM1 gangliosidosis and Morquio B disease: expression analysis of missense mutations affecting the catalytic site of acid beta-galactosidase. Hofer D, et al. Hum Mutat, 2009 Aug. PMID 19472408. New GLB1 mutation in siblings with Morquio type B disease presenting with mental regression. Mayer FQ, et al. Mol Genet Metab, 2009 Mar. PMID 19091613.

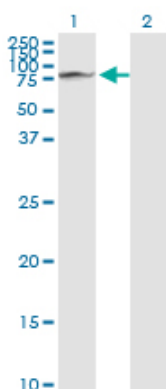
## Images



Antibody Reactive Against Recombinant Protein. Western Blot detection against Immunogen (36.74 KDa) .

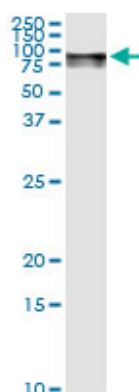


GLB1 monoclonal antibody (M01), clone 6E7 Western Blot analysis of GLB1 expression in HeLa ( (Cat # AT2205a )



Western Blot analysis of GLB1 expression in transfected 293T cell line by GLB1 monoclonal antibody (M01), clone 6E7.

Lane 1: GLB1 transfected lysate (76.1 KDa).  
Lane 2: Non-transfected lysate.



Immunoprecipitation of GLB1 transfected lysate using anti-GLB1 monoclonal antibody and Protein A Magnetic Bead ([U0007](#)), and immunoblotted with GLB1 MaxPab rabbit polyclonal antibody.

Please note: All products are 'FOR RESEARCH USE ONLY. NOT FOR USE IN DIAGNOSTIC OR THERAPEUTIC PROCEDURES'.