

GLTSCR2 Antibody (monoclonal) (M03)

Mouse monoclonal antibody raised against a partial recombinant GLTSCR2.

Catalog # AT2212a

Product Information

Application	WB, IF, E
Primary Accession	Q9NZM5
Other Accession	NM_015710
Reactivity	Human
Host	mouse
Clonality	monoclonal
Isotype	IgG1 Kappa
Clone Names	5A8
Calculated MW	54389

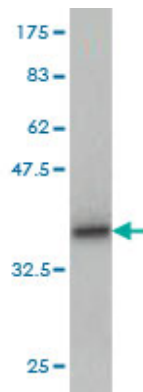
Additional Information

Gene ID	29997
Other Names	Glioma tumor suppressor candidate region gene 2 protein, p60, GLTSCR2
Target/Specificity	GLTSCR2 (NP_056525, 402 a.a. ~ 478 a.a) partial recombinant protein with GST tag. MW of the GST tag alone is 26 KDa.
Dilution	WB~~1:500~1000 IF~~1:50~200 E~~N/A
Format	Clear, colorless solution in phosphate buffered saline, pH 7.2 .
Storage	Store at -20°C or lower. Aliquot to avoid repeated freezing and thawing.
Precautions	GLTSCR2 Antibody (monoclonal) (M03) is for research use only and not for use in diagnostic or therapeutic procedures.

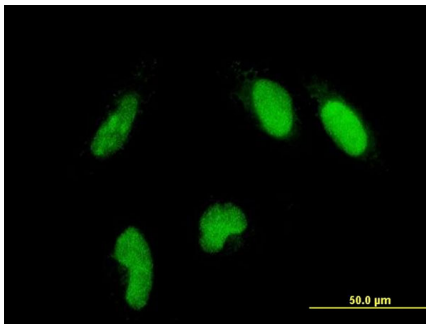
References

The expression of GLTSCR2, a candidate tumor suppressor, is reduced in seborrheic keratosis compared to normal skin. Kim JY, et al. Pathol Res Pract, 2010 May 15. PMID 20185249. GLTSCR2/PICT-1, a putative tumor suppressor gene product, induces the nucleolar targeting of the Kaposi's sarcoma-associated herpesvirus KS-Bcl-2 protein. Kalt I, et al. J Virol, 2010 Mar. PMID 20042497. Defining the human deubiquitinating enzyme interaction landscape. Sowa ME, et al. Cell, 2009 Jul 23. PMID 19615732. Mammalian BTBD12/SLX4 assembles a Holliday junction resolvase and is required for DNA repair. Svendsen JM, et al. Cell, 2009 Jul 10. PMID 19596235. Suppression of putative tumour suppressor gene GLTSCR2 expression in human glioblastomas. Kim YJ, et al. J Pathol, 2008 Oct. PMID 18729076.

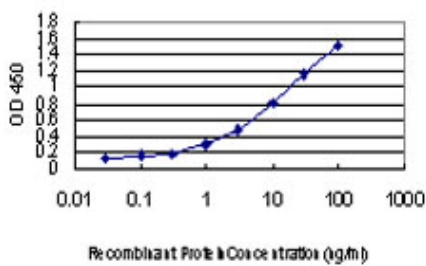
Images



Antibody Reactive Against Recombinant Protein. Western Blot detection against Immunogen (34.21 KDa) .



Immunofluorescence of monoclonal antibody to GLTSCR2 on HeLa cell . [antibody concentration 10 ug/ml]



Detection limit for recombinant GST tagged GLTSCR2 is approximately 0.1ng/ml as a capture antibody.

Please note: All products are 'FOR RESEARCH USE ONLY. NOT FOR USE IN DIAGNOSTIC OR THERAPEUTIC PROCEDURES'.