

GMPPB Antibody (monoclonal) (M07)

Mouse monoclonal antibody raised against a partial recombinant GMPPB.

Catalog # AT2222a

Product Information

Application	WB, IHC, E
Primary Accession	Q9Y5P6
Other Accession	NM_013334
Reactivity	Human
Host	mouse
Clonality	monoclonal
Isotype	IgG2b Kappa
Clone Names	2B5
Calculated MW	39834

Additional Information

Gene ID	29925
Other Names	Mannose-1-phosphate guanyltransferase beta, GDP-mannose pyrophosphorylase B, GTP-mannose-1-phosphate guanylyltransferase beta, GMPPB
Target/Specificity	GMPPB (NP_037466, 1 a.a. ~ 110 a.a) partial recombinant protein with GST tag. MW of the GST tag alone is 26 KDa.
Dilution	WB~~1:500~1000 IHC~~1:100~500 E~~N/A
Format	Clear, colorless solution in phosphate buffered saline, pH 7.2 .
Storage	Store at -20°C or lower. Aliquot to avoid repeated freezing and thawing.
Precautions	GMPPB Antibody (monoclonal) (M07) is for research use only and not for use in diagnostic or therapeutic procedures.

Background

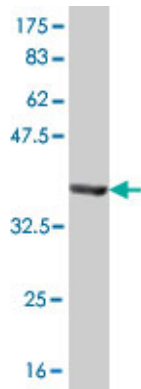
This gene is thought to encode a GDP-mannose pyrophosphorylase. The encoded protein catalyzes the conversion of mannose-1-phosphate and GTP to GDP-mannose, a reaction involved in the production of N-linked oligosaccharides. Alternatively spliced transcript variants encoding distinct isoforms have been described.

References

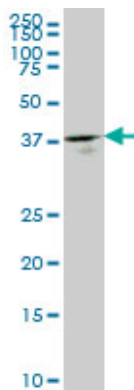
Association analysis of 3p21 with Crohn's disease in a New Zealand population. Morgan AR, et al. Hum

Immunol, 2010 Jun. PMID 20307617. Towards a proteome-scale map of the human protein-protein interaction network. Rual JF, et al. Nature, 2005 Oct 20. PMID 16189514. The status, quality, and expansion of the NIH full-length cDNA project: the Mammalian Gene Collection (MGC). Gerhard DS, et al. Genome Res, 2004 Oct. PMID 15489334. Complete sequencing and characterization of 21,243 full-length human cDNAs. Ota T, et al. Nat Genet, 2004 Jan. PMID 14702039. The secreted protein discovery initiative (SPDI), a large-scale effort to identify novel human secreted and transmembrane proteins: a bioinformatics assessment. Clark HF, et al. Genome Res, 2003 Oct. PMID 12975309.

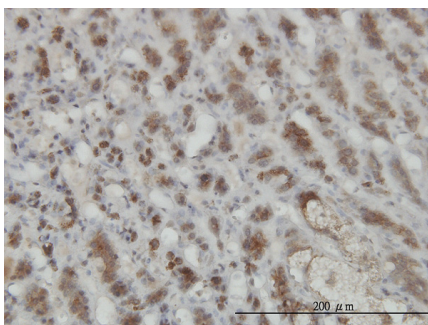
Images



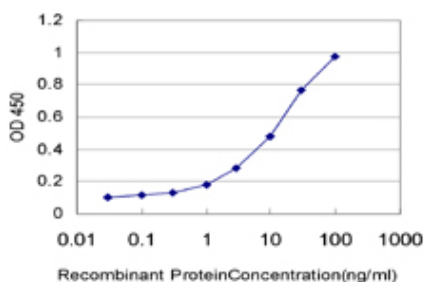
Antibody Reactive Against Recombinant Protein. Western Blot detection against Immunogen (37.84 KDa) .



GMPPB monoclonal antibody (M07), clone 2B5 Western Blot analysis of GMPPB expression in HepG2 (Cat # AT2222a)



Immunoperoxidase of monoclonal antibody to GMPPB on formalin-fixed paraffin-embedded human adrenal gland. [antibody concentration 3 ug/ml]



Detection limit for recombinant GST tagged GMPPB is approximately 0.3 ng/ml as a capture antibody.

Please note: All products are 'FOR RESEARCH USE ONLY. NOT FOR USE IN DIAGNOSTIC OR THERAPEUTIC PROCEDURES'.