

GOLGB1 Antibody (monoclonal) (M01)

Mouse monoclonal antibody raised against a partial recombinant GOLGB1.

Catalog # AT2238a

Product Information

Application	WB, E
Primary Accession	Q14789
Other Accession	NM_004487
Reactivity	Human
Host	mouse
Clonality	monoclonal
Isotype	IgG1 Kappa
Clone Names	6D4
Calculated MW	376019

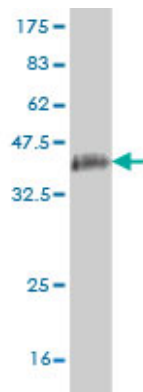
Additional Information

Gene ID	2804
Other Names	Golgin subfamily B member 1, 372 kDa Golgi complex-associated protein, GCP372, Giantin, Macrogolgin, GOLGB1
Target/Specificity	GOLGB1 (NP_004478, 3 a.a. ~ 91 a.a) partial recombinant protein with GST tag. MW of the GST tag alone is 26 KDa.
Dilution	WB~~1:500~1000 E~~N/A
Format	Clear, colorless solution in phosphate buffered saline, pH 7.2 .
Storage	Store at -20°C or lower. Aliquot to avoid repeated freezing and thawing.
Precautions	GOLGB1 Antibody (monoclonal) (M01) is for research use only and not for use in diagnostic or therapeutic procedures.

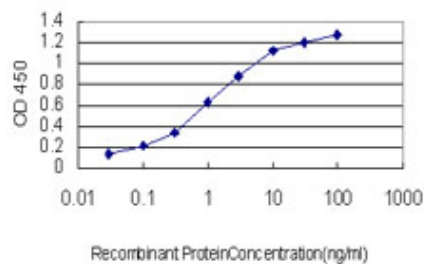
References

Fine expression profiling of full-length transcripts using a size-unbiased cDNA library prepared with the vector-capping method. Oshikawa M, et al. DNA Res, 2008 Jun 30. PMID 18487259. Toward a confocal subcellular atlas of the human proteome. Barbe L, et al. Mol Cell Proteomics, 2008 Mar. PMID 18029348. Giantin interacts with both the small GTPase Rab6 and Rab1. Rosing M, et al. Exp Cell Res, 2007 Jul 1. PMID 17475246. A human protein-protein interaction network: a resource for annotating the proteome. Stelzl U, et al. Cell, 2005 Sep 23. PMID 16169070. Golgin tethers define subpopulations of COPI vesicles. Malsam J, et al. Science, 2005 Feb 18. PMID 15718469.

Images



Antibody Reactive Against Recombinant Protein. Western Blot detection against Immunogen (35.53 KDa) .



Detection limit for recombinant GST tagged GOLGB1 is approximately 0.03ng/ml as a capture antibody.

Please note: All products are 'FOR RESEARCH USE ONLY. NOT FOR USE IN DIAGNOSTIC OR THERAPEUTIC PROCEDURES'.