

## GPD1 Antibody (monoclonal) (M01)

Mouse monoclonal antibody raised against a full length recombinant GPD1.

Catalog # AT2242a

### Product Information

---

<b>Application</b>	WB, E
<b>Primary Accession</b>	<a href="#">P21695</a>
<b>Other Accession</b>	<a href="#">BC032234</a>
<b>Reactivity</b>	Human
<b>Host</b>	mouse
<b>Clonality</b>	monoclonal
<b>Isotype</b>	IgG1 Kappa
<b>Clone Names</b>	3C10-1C4
<b>Calculated MW</b>	37568

### Additional Information

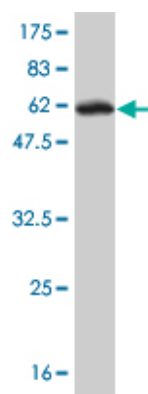
---

<b>Gene ID</b>	2819
<b>Other Names</b>	Glycerol-3-phosphate dehydrogenase [NAD(+)], cytoplasmic, GPD-C, GPDH-C, GPD1
<b>Target/Specificity</b>	GPD1 (AAH32234, 1 a.a. ~ 349 a.a) full-length recombinant protein with GST tag. MW of the GST tag alone is 26 KDa.
<b>Dilution</b>	WB~~1:500~1000 E~~N/A
<b>Format</b>	Clear, colorless solution in phosphate buffered saline, pH 7.2 .
<b>Storage</b>	Store at -20°C or lower. Aliquot to avoid repeated freezing and thawing.
<b>Precautions</b>	GPD1 Antibody (monoclonal) (M01) is for research use only and not for use in diagnostic or therapeutic procedures.

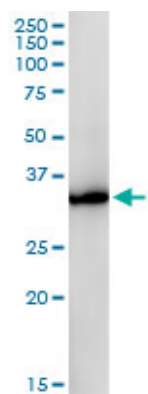
### References

---

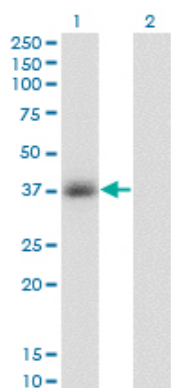
The influence of obstructive sleep apnea on the expression of glycerol-3-phosphate dehydrogenase 1 gene. Guindalini C, et al. Exp Biol Med (Maywood), 2010 Jan. PMID 20404019.[Colorectal cancer 2D-proteomics: identification of altered protein expression] Krasnov GS, et al. Mol Biol (Mosk), 2009 Mar-Apr. PMID 19425502.Decreased levels of metabolic enzymes in pancreatic islets of patients with type 2 diabetes. MacDonald MJ, et al. Diabetologia, 2009 Jun. PMID 19296078.GRB14, GPD1, and GDF8 as potential network collaborators in weight loss-induced improvements in insulin action in human skeletal muscle. Park JJ, et al. Physiol Genomics, 2006 Oct 11. PMID 16849634.Crystal structures of human glycerol 3-phosphate dehydrogenase 1 (GPD1). Ou X, et al. J Mol Biol, 2006 Mar 31. PMID 16460752.



Antibody Reactive Against Recombinant Protein. Western Blot detection against Immunogen (64.13 KDa) .

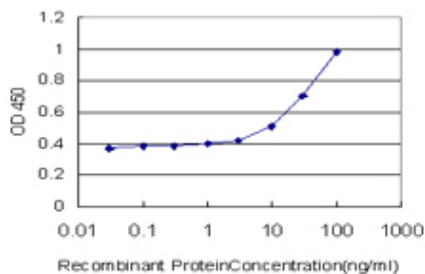


GPD1 monoclonal antibody (M01), clone 3C10-1C4. Western Blot analysis of GPD1 expression in human kidney.



Western Blot analysis of GPD1 expression in transfected 293T cell line by GPD1 monoclonal antibody (M01), clone 3C10-1C4.

Lane 1: GPD1 transfected lysate (Predicted MW: 37.6 KDa).  
Lane 2: Non-transfected lysate.



Detection limit for recombinant GST tagged GPD1 is approximately 1ng/ml as a capture antibody.

Please note: All products are 'FOR RESEARCH USE ONLY. NOT FOR USE IN DIAGNOSTIC OR THERAPEUTIC PROCEDURES'.