

GPR175 Antibody (monoclonal) (M01)

Mouse monoclonal antibody raised against a partial recombinant GPR175.

Catalog # AT2246a

Product Information

Application	WB
Primary Accession	Q86W33
Other Accession	NM_016372
Reactivity	Human
Host	mouse
Clonality	monoclonal
Isotype	IgG2b Kappa
Clone Names	6D7
Calculated MW	41053

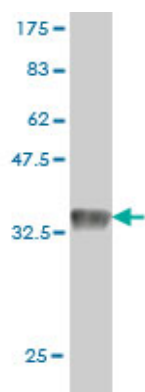
Additional Information

Gene ID	131601
Other Names	Transmembrane protein adipocyte-associated 1, Integral membrane protein GPR175, Transmembrane protein 227, TPRA1, GPR175, TMEM227
Target/Specificity	GPR175 (NP_057456, 281 a.a. ~ 371 a.a) partial recombinant protein with GST tag. MW of the GST tag alone is 26 KDa.
Dilution	WB~~1:500~1000
Format	Clear, colorless solution in phosphate buffered saline, pH 7.2 .
Storage	Store at -20°C or lower. Aliquot to avoid repeated freezing and thawing.
Precautions	GPR175 Antibody (monoclonal) (M01) is for research use only and not for use in diagnostic or therapeutic procedures.

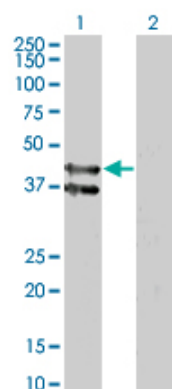
References

Identifying leukocyte gene expression patterns associated with plasma lipid levels in human subjects. Ma J, et al. Atherosclerosis, 2007 Mar. PMID 16806233. The status, quality, and expansion of the NIH full-length cDNA project: the Mammalian Gene Collection (MGC). Gerhard DS, et al. Genome Res, 2004 Oct. PMID 15489334. Complete sequencing and characterization of 21,243 full-length human cDNAs. Ota T, et al. Nat Genet, 2004 Jan. PMID 14702039. Generation and initial analysis of more than 15,000 full-length human and mouse cDNA sequences. Strausberg RL, et al. Proc Natl Acad Sci U S A, 2002 Dec 24. PMID 12477932. Differential expression of a novel seven transmembrane domain protein in epididymal fat from aged and diabetic mice. Yang H, et al. Endocrinology, 1999 Jun. PMID 10342878.

Images

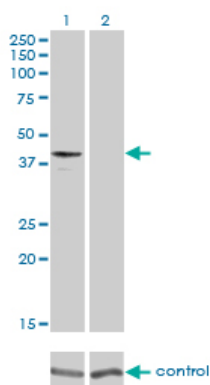


Antibody Reactive Against Recombinant Protein. Western Blot detection against Immunogen (35.75 KDa) .



Western Blot analysis of GPR175 expression in transfected 293T cell line by GPR175 monoclonal antibody (M01), clone 6D7.

Lane 1: GPR175 transfected lysate(41.053 KDa).
Lane 2: Non-transfected lysate.



Western blot analysis of GPR175 over-expressed 293 cell line, cotransfected with GPR175 Validated Chimera RNAi (Cat # AT2246a)

Please note: All products are 'FOR RESEARCH USE ONLY. NOT FOR USE IN DIAGNOSTIC OR THERAPEUTIC PROCEDURES'.