

GPS2 Antibody (monoclonal) (M01)

Mouse monoclonal antibody raised against a partial recombinant GPS2.

Catalog # AT2253a

Product Information

Application	WB, E
Primary Accession	Q13227
Other Accession	BC013652
Reactivity	Human
Host	mouse
Clonality	monoclonal
Isotype	IgG1 Kappa
Clone Names	3C4
Calculated MW	36689

Additional Information

Gene ID	2874
Other Names	G protein pathway suppressor 2, GPS-2, GPS2
Target/Specificity	GPS2 (AAH13652, 228 a.a. ~ 327 a.a) partial recombinant protein with GST tag. MW of the GST tag alone is 26 KDa.
Dilution	WB~~1:500~1000 E~~N/A
Format	Clear, colorless solution in phosphate buffered saline, pH 7.2 .
Storage	Store at -20°C or lower. Aliquot to avoid repeated freezing and thawing.
Precautions	GPS2 Antibody (monoclonal) (M01) is for research use only and not for use in diagnostic or therapeutic procedures.

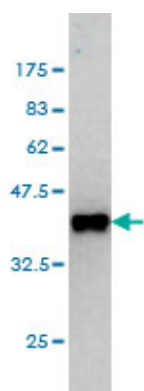
Background

This gene encodes a protein involved in G protein-mitogen-activated protein kinase (MAPK) signaling cascades. When overexpressed in mammalian cells, this gene could potentially suppress a RAS- and MAPK-mediated signal and interfere with JNK activity, suggesting that the function of this gene may be signal repression. The encoded protein is an integral subunit of the NCOR1-HDAC3 (nuclear receptor corepressor 1-histone deacetylase 3) complex, and it was shown that the complex inhibits JNK activation through this subunit and thus could potentially provide an alternative mechanism for hormone-mediated antagonism of AP1 (activator protein 1) function.

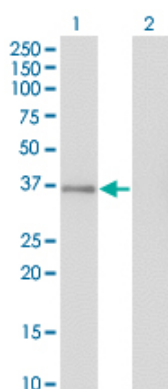
References

1. Involvement of corepressor complex subunit GPS2 in transcriptional pathways governing human bile acid biosynthesis. Sanyal S, Bavner A, Haroniti A, Nilsson LM, Lundasen T, Rehnmark S, Witt MR, Einarsson C, Talianidis I, Gustafsson JA, Treuter E. *Proc Natl Acad Sci U S A*. 2007 Oct 2;104(40):15665-70. Epub 2007 Sep 25.

Images

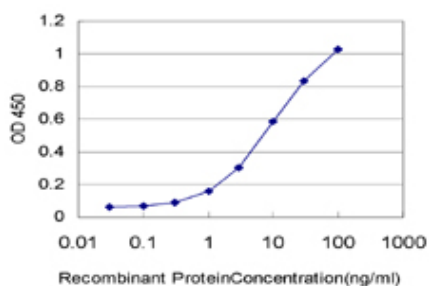


Antibody Reactive Against Recombinant Protein. Western Blot detection against Immunogen (36.63 KDa) .



Western Blot analysis of GPS2 expression in transfected 293T cell line by GPS2 monoclonal antibody (M01), clone 3C4.

Lane 1: GPS2 transfected lysate (Predicted MW: 36.7 KDa).
Lane 2: Non-transfected lysate.



Detection limit for recombinant GST tagged GPS2 is approximately 0.3 ng/ml as a capture antibody.

Please note: All products are 'FOR RESEARCH USE ONLY. NOT FOR USE IN DIAGNOSTIC OR THERAPEUTIC PROCEDURES'.