

GRB10 Antibody (monoclonal) (M01)

Mouse monoclonal antibody raised against a partial recombinant GRB10.

Catalog # AT2257a

Product Information

Application	WB, E
Primary Accession	Q13322
Other Accession	BC024285
Reactivity	Human
Host	mouse
Clonality	monoclonal
Isotype	IgG2a Kappa
Clone Names	1A7
Calculated MW	67231

Additional Information

Gene ID	2887
Other Names	Growth factor receptor-bound protein 10, GRB10 adapter protein, Insulin receptor-binding protein Grb-IR, GRB10, GRBIR, KIAA0207
Target/Specificity	GRB10 (AAH24285, 61 a.a. ~ 150 a.a) partial recombinant protein with GST tag. MW of the GST tag alone is 26 KDa.
Dilution	WB~~1:500~1000 E~~N/A
Format	Clear, colorless solution in phosphate buffered saline, pH 7.2 .
Storage	Store at -20°C or lower. Aliquot to avoid repeated freezing and thawing.
Precautions	GRB10 Antibody (monoclonal) (M01) is for research use only and not for use in diagnostic or therapeutic procedures.

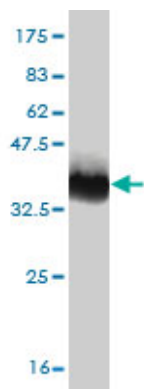
Background

The product of this gene belongs to a small family of adapter proteins that are known to interact with a number of receptor tyrosine kinases and signaling molecules. This gene encodes a growth factor receptor-binding protein that interacts with insulin receptors and insulin-like growth-factor receptors. Overexpression of some isoforms of the encoded protein inhibits tyrosine kinase activity and results in growth suppression. This gene is imprinted in a highly isoform- and tissue-specific manner. Alternatively spliced transcript variants encoding different isoforms have been identified.

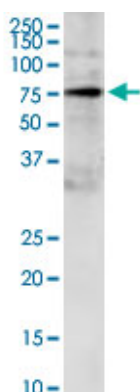
References

Structural and functional studies of the Ras-associating and pleckstrin-homology domains of Grb10 and Grb14. Depetris RS, et al. Nat Struct Mol Biol, 2009 Aug. PMID 19648926. Reciprocal imprinting of human GRB10 in placental trophoblast and brain: evolutionary conservation of reversed allelic expression. Monk D, et al. Hum Mol Genet, 2009 Aug 15. PMID 19487367. Genome-wide association study and meta-analysis find that over 40 loci affect risk of type 1 diabetes. Barrett JC, et al. Nat Genet, 2009 Jun. PMID 19430480. Identification of novel candidate genes for type 2 diabetes from a genome-wide association scan in the Old Order Amish: evidence for replication from diabetes-related quantitative traits and from independent populations. Rumpson E, et al. Diabetes, 2007 Dec. PMID 17846126. Systematic identification of SH3 domain-mediated human protein-protein interactions by peptide array target screening. Wu C, et al. Proteomics, 2007 Jun. PMID 17474147.

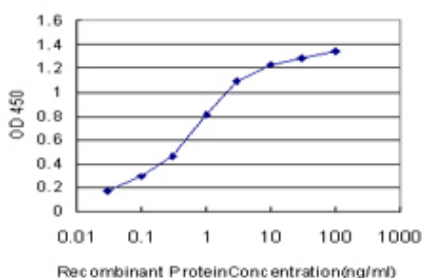
Images



Antibody Reactive Against Recombinant Protein. Western Blot detection against Immunogen (35.64 kDa) .



GRB10 monoclonal antibody (M01), clone 1A7. Western Blot analysis of GRB10 expression in IMR-32.



Detection limit for recombinant GST tagged GRB10 is approximately 0.03 ng/ml as a capture antibody.

Please note: All products are 'FOR RESEARCH USE ONLY. NOT FOR USE IN DIAGNOSTIC OR THERAPEUTIC PROCEDURES'.