

GRCC9 Antibody (monoclonal) (M01)

Mouse monoclonal antibody raised against a partial recombinant GRCC9.

Catalog # AT2258a

Product Information

Application	WB, IHC, E
Primary Accession	Q99619
Other Accession	BC002983
Reactivity	Human
Host	mouse
Clonality	monoclonal
Isotype	IgG1 Kappa
Clone Names	1E7
Calculated MW	28630

Additional Information

Gene ID	84727
Other Names	SPRY domain-containing SOCS box protein 2, SSB-2, Gene-rich cluster protein C9, SPSB2, GRCC9, SSB2
Target/Specificity	GRCC9 (AAH02983, 1 a.a. ~ 90 a.a) partial recombinant protein with GST tag. MW of the GST tag alone is 26 KDa.
Dilution	WB~~1:500~1000 IHC~~1:100~500 E~~N/A
Format	Clear, colorless solution in phosphate buffered saline, pH 7.2 .
Storage	Store at -20°C or lower. Aliquot to avoid repeated freezing and thawing.
Precautions	GRCC9 Antibody (monoclonal) (M01) is for research use only and not for use in diagnostic or therapeutic procedures.

Background

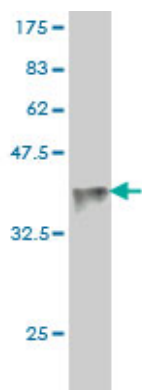
This gene encodes a suppressor of cytokine signaling (SOCS) family member, and it belongs to the subfamily of proteins containing a central SPRY (repeats in splA and RyR) domain and a C-terminal SOCS box. This gene is present in a gene-rich cluster on chromosome 12p13 in the vicinity of the CD4 antigen and triosephosphate isomerase genes. Alternative splicing results in multiple transcript variants.

References

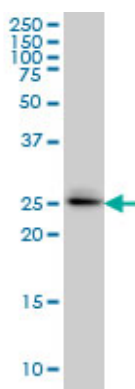
Transcriptomic profile of two canine mammary cancer cell lines with different proliferative and anti-apoptotic potential. Krol M, et al. J Physiol Pharmacol, 2009 May. PMID 19609018.Array MAPPIT:

high-throughput interactome analysis in mammalian cells. Lievens S, et al. J Proteome Res, 2009 Feb. PMID 19159283. Identification of genes related to Parkinson's disease using expressed sequence tags. Kim JM, et al. DNA Res, 2006 Dec 31. PMID 17213182. The SPRY domain-containing SOCS box protein 1 (SSB-1) interacts with MET and enhances the hepatocyte growth factor-induced Erk-Elk-1-serum response element pathway. Wang D, et al. J Biol Chem, 2005 Apr 22. PMID 15713673. The status, quality, and expansion of the NIH full-length cDNA project: the Mammalian Gene Collection (MGC). Gerhard DS, et al. Genome Res, 2004 Oct. PMID 15489334.

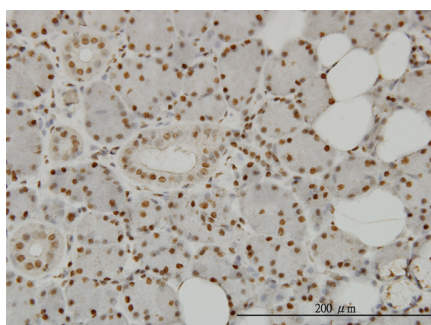
Images



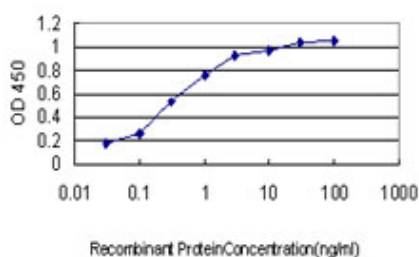
Antibody Reactive Against Recombinant Protein. Western Blot detection against Immunogen (35.64 KDa) .



GRCC9 monoclonal antibody (M01), clone 1E6 Western Blot analysis of SPSB2 expression in A-549 (Cat # AT2258a)



Immunoperoxidase of monoclonal antibody to SPSB2 on formalin-fixed paraffin-embedded human salivary gland. [antibody concentration 3 ug/ml]



Detection limit for recombinant GST tagged SPSB2 is approximately 0.03ng/ml as a capture antibody.