

## GSC Antibody (monoclonal) (M01)

Mouse monoclonal antibody raised against a partial recombinant GSC.

Catalog # AT2267a

### Product Information

---

<b>Application</b>	WB, IHC, IP, E
<b>Primary Accession</b>	<a href="#">P56915</a>
<b>Other Accession</b>	<a href="#">NM_173849</a>
<b>Reactivity</b>	Human
<b>Host</b>	mouse
<b>Clonality</b>	monoclonal
<b>Isotype</b>	IgG2a Kappa
<b>Clone Names</b>	4H7
<b>Calculated MW</b>	28150

### Additional Information

---

<b>Gene ID</b>	145258
<b>Other Names</b>	Homeobox protein goosecoid, GSC
<b>Target/Specificity</b>	GSC (NP_776248, 151 a.a. ~ 257 a.a) partial recombinant protein with GST tag. MW of the GST tag alone is 26 KDa.
<b>Dilution</b>	WB~~1:500~1000 IHC~~1:100~500 IP~~N/A E~~N/A
<b>Format</b>	Clear, colorless solution in phosphate buffered saline, pH 7.2 .
<b>Storage</b>	Store at -20°C or lower. Aliquot to avoid repeated freezing and thawing.
<b>Precautions</b>	GSC Antibody (monoclonal) (M01) is for research use only and not for use in diagnostic or therapeutic procedures.

### Background

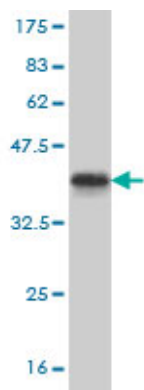
---

This gene encodes a member of the bicoid subfamily of the paired (PRD) homeobox family of proteins. The encoded protein acts as a transcription factor and may be autoregulatory. A similar protein in mice plays a role in craniofacial and rib cage development during embryogenesis.

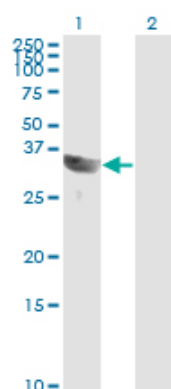
### References

---

1.Generation of pluripotent stem cells from adult human testis.Conrad S, Renninger M, Hennenlotter J, Wiesner T, Just L, Bonin M, Aicher W, Buhring HJ, Mattheus U, Mack A, Wagner HJ, Minger S, Matzkies M, Reppel M, Hescheler J, Sievert KD, Stenzl A, Skutella T.Nature. 2008 Nov 20;456(7220):344-9. Epub 2008 Oct 8.

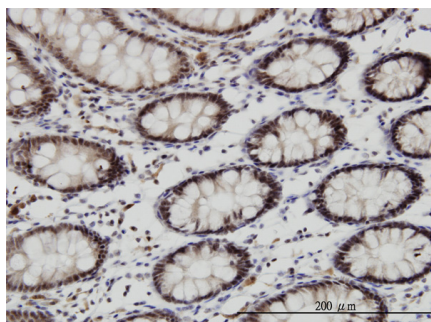


Antibody Reactive Against Recombinant Protein. Western Blot detection against Immunogen (37.51 KDa) .

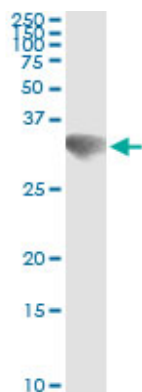


Western Blot analysis of GSC expression in transfected 293T cell line by GSC monoclonal antibody (M01), clone 4H7.

Lane 1: GSC transfected lysate(28.1 KDa).  
Lane 2: Non-transfected lysate.

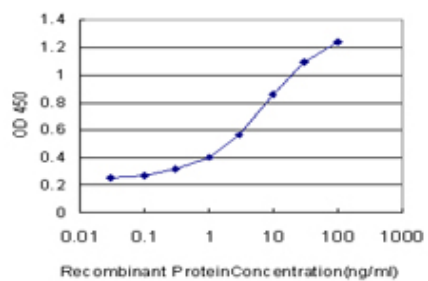


Immunoperoxidase of monoclonal antibody to GSC on formalin-fixed paraffin-embedded human colon. [antibody concentration 3 ug/ml]



Immunoprecipitation of GSC transfected lysate using anti-GSC monoclonal antibody and Protein A Magnetic Bead ([U0007](#)), and immunoblotted with GSC MaxPab rabbit polyclonal antibody.

Detection limit for recombinant GST tagged GSC is approximately 0.1ng/ml as a capture antibody.



Please note: All products are 'FOR RESEARCH USE ONLY. NOT FOR USE IN DIAGNOSTIC OR THERAPEUTIC PROCEDURES'.