

GSTP1 Antibody (monoclonal) (M01)

Mouse monoclonal antibody raised against a full length recombinant GSTP1.

Catalog # AT2283a

Product Information

Application	WB, IF, IP
Primary Accession	P09211
Other Accession	BC010915
Reactivity	Human
Host	mouse
Clonality	monoclonal
Isotype	IgG1 kappa
Clone Names	2G6-F6
Calculated MW	23356

Additional Information

Gene ID	2950
Other Names	Glutathione S-transferase P, GST class-pi, GSTP1-1, GSTP1, FAES3, GST3
Target/Specificity	GSTP1 (AAH10915, 1 a.a. ~ 210 a.a) full-length recombinant protein with GST tag. MW of the GST tag alone is 26 KDa.
Dilution	WB~~1:500~1000 IF~~1:50~200 IP~~N/A
Format	Clear, colorless solution in phosphate buffered saline, pH 7.2 .
Storage	Store at -20°C or lower. Aliquot to avoid repeated freezing and thawing.
Precautions	GSTP1 Antibody (monoclonal) (M01) is for research use only and not for use in diagnostic or therapeutic procedures.

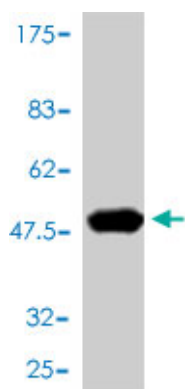
Background

Glutathione S-transferases (GSTs) are a family of enzymes that play an important role in detoxification by catalyzing the conjugation of many hydrophobic and electrophilic compounds with reduced glutathione. Based on their biochemical, immunologic, and structural properties, the soluble GSTs are categorized into 4 main classes: alpha, mu, pi, and theta. This GST family member is a polymorphic gene encoding active, functionally different GSTP1 variant proteins that are thought to function in xenobiotic metabolism and play a role in susceptibility to cancer, and other diseases.

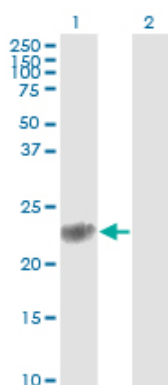
References

1.Endothelial cell dysfunction and cytoskeletal changes associated with repression of p16(INK4a) during

Images



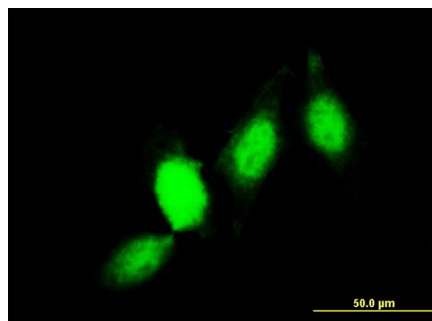
Antibody Reactive Against Recombinant Protein.Western Blot detection against Immunogen (48.84 KDa) .



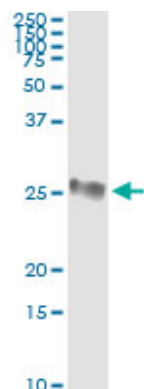
Western Blot analysis of GSP1 expression in transfected 293T cell line by GSP1 monoclonal antibody (M01), clone 2G6-F6.

Lane 1: GSP1 transfected lysate (Predicted MW: 23.3 KDa).

Lane 2: Non-transfected lysate.



Immunofluorescence of monoclonal antibody to GSP1 on HeLa cell. [antibody concentration 10 ug/ml]



Immunoprecipitation of GSP1 transfected lysate using anti-GSP1 monoclonal antibody and Protein A Magnetic Bead ([U0007](#)), and immunoblotted with GSP1 MaxPab rabbit polyclonal antibody.