

GTF2E2 Antibody (monoclonal) (M01)

Mouse monoclonal antibody raised against a full length recombinant GTF2E2.

Catalog # AT2286a

Product Information

Application	WB, IF
Primary Accession	P29084
Other Accession	BC030572
Reactivity	Human
Host	mouse
Clonality	monoclonal
Isotype	IgG1 Kappa
Clone Names	2C3
Calculated MW	33044

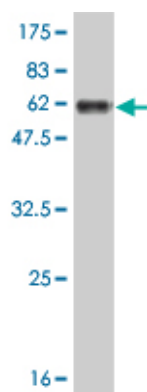
Additional Information

Gene ID	2961
Other Names	Transcription initiation factor IIE subunit beta, TFIIE-beta, General transcription factor IIE subunit 2, GTF2E2, TF2E2
Target/Specificity	GTF2E2 (AAH30572, 1 a.a. ~ 291 a.a) full-length recombinant protein with GST tag. MW of the GST tag alone is 26 KDa.
Dilution	WB~~1:500~1000 IF~~1:50~200
Format	Clear, colorless solution in phosphate buffered saline, pH 7.2 .
Storage	Store at -20°C or lower. Aliquot to avoid repeated freezing and thawing.
Precautions	GTF2E2 Antibody (monoclonal) (M01) is for research use only and not for use in diagnostic or therapeutic procedures.

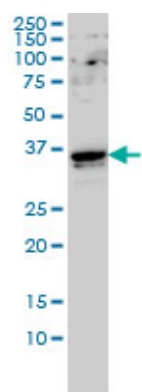
References

Common genetic variation and performance on standardized cognitive tests. Cirulli ET, et al. Eur J Hum Genet, 2010 Jul. PMID 20125193. Genetic analysis in a Dutch study sample identifies more ulcerative colitis susceptibility loci and shows their additive role in disease risk. Festen EA, et al. Am J Gastroenterol, 2010 Feb. PMID 19861958. Central forkhead domain of human TFIIE beta plays a primary role in binding double-stranded DNA at transcription initiation. Tanaka A, et al. Genes Cells, 2009 Mar. PMID 19210545. Systematic analysis of the protein interaction network for the human transcription machinery reveals the identity of the 7SK capping enzyme. Jeronimo C, et al. Mol Cell, 2007 Jul 20. PMID 17643375. Structure and oligomeric state of human transcription factor TFIIE. Jawhari A, et al. EMBO Rep, 2006 May. PMID 16547462.

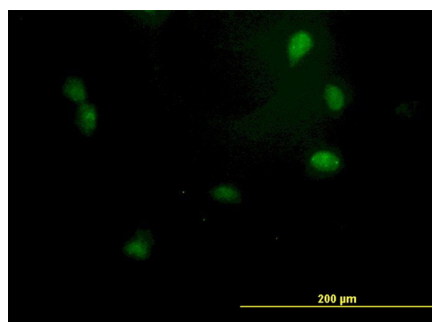
Images



Antibody Reactive Against Recombinant Protein. Western Blot detection against Immunogen (57.75 KDa) .



GTF2E2 monoclonal antibody (M01), clone 2C3 Western Blot analysis of GTF2E2 expression in HeLa S3 NE ((Cat # AT2286a)



Immunofluorescence of monoclonal antibody to GTF2E2 on HeLa cell. [antibody concentration 40 ug/ml]

Please note: All products are 'FOR RESEARCH USE ONLY. NOT FOR USE IN DIAGNOSTIC OR THERAPEUTIC PROCEDURES'.