

# GTF2H1 Antibody (monoclonal) (M01)

Mouse monoclonal antibody raised against a full length recombinant GTF2H1.

Catalog # AT2287a

## Product Information

---

|                          |                          |
|--------------------------|--------------------------|
| <b>Application</b>       | WB, IHC, IF, E           |
| <b>Primary Accession</b> | <a href="#">P32780</a>   |
| <b>Other Accession</b>   | <a href="#">BC000365</a> |
| <b>Reactivity</b>        | Human                    |
| <b>Host</b>              | mouse                    |
| <b>Clonality</b>         | monoclonal               |
| <b>Isotype</b>           | IgG1 kappa               |
| <b>Clone Names</b>       | 1F12-1B5                 |
| <b>Calculated MW</b>     | 62032                    |

## Additional Information

---

|                           |   |
|---------------------------|---|
| <b>Gene ID</b>            | 2965  |
| <b>Other Names</b>        | General transcription factor IIH subunit 1, Basic transcription factor 2 62 kDa subunit, BTF2 p62, General transcription factor IIH polypeptide 1, TFIIH basal transcription factor complex p62 subunit, GTF2H1, BTF2 |
| <b>Target/Specificity</b> | GTF2H1 (AAH00365, 1 a.a. ~ 548 a.a) full-length recombinant protein with GST tag. MW of the GST tag alone is 26 KDa.  |
| <b>Dilution</b>           | WB~~1:500~1000 IHC~~1:100~500 IF~~1:50~200 E~~N/A   |
| <b>Format</b>             | Clear, colorless solution in phosphate buffered saline, pH 7.2 .  |
| <b>Storage</b>            | Store at -20°C or lower. Aliquot to avoid repeated freezing and thawing.  |
| <b>Precautions</b>        | GTF2H1 Antibody (monoclonal) (M01) is for research use only and not for use in diagnostic or therapeutic procedures.  |

## References

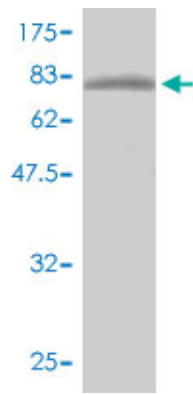
---

1.XPB induces C1D expression to counteract UV-induced apoptosis.Li G, Liu J, Abu-Asab M, Masabumi S, Maru Y.Mol Cancer Res. 2010 Jun;8(6):885-95. Epub 2010 Jun 8.

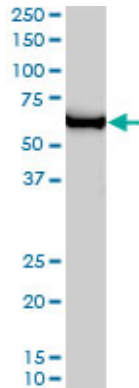
## Images

---

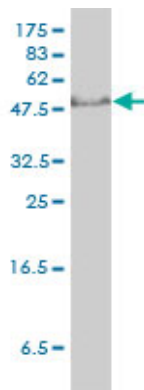
Antibody Reactive Against Recombinant Protein.Western Blot detection against Immunogen (86.02 KDa) .



GTF2H1 monoclonal antibody (M01), clone 1F12-1B5.  
Western Blot analysis of GTF2H1 expression in HeLa S3 NE  
(Cat # AT2287a)

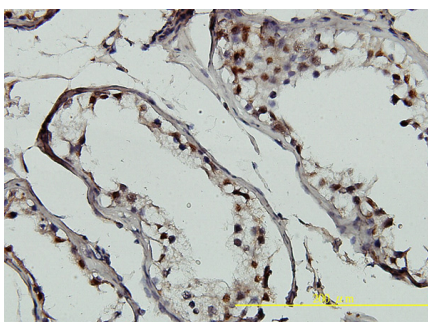
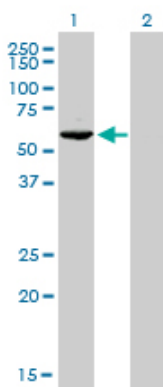


GTF2H1 monoclonal antibody (M01), clone 1F12-1B5  
Western Blot analysis of GTF2H1 expression in Jurkat (Cat # AT2287a)

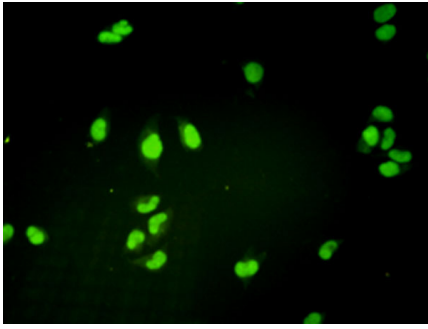


Western Blot analysis of GTF2H1 expression in transfected 293T cell line by GTF2H1 monoclonal antibody (M01), clone 1F12-1B5.

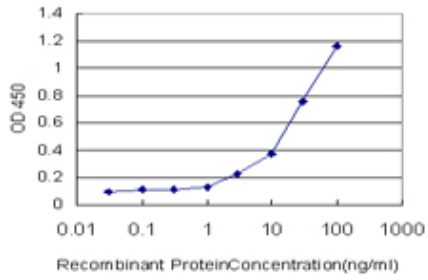
Lane 1: GTF2H1 transfected lysate(62 KDa).  
Lane 2: Non-transfected lysate.



Immunoperoxidase of monoclonal antibody to GTF2H1 on formalin-fixed paraffin-embedded human testis tissue.[antibody concentration 5 ug/ml]



Immunofluorescence of monoclonal antibody to GTF2H1 on HeLa cell. [antibody concentration 10 ug/ml]



Detection limit for recombinant GST tagged GTF2H1 is approximately 1 ng/ml as a capture antibody.

Please note: All products are 'FOR RESEARCH USE ONLY. NOT FOR USE IN DIAGNOSTIC OR THERAPEUTIC PROCEDURES'.