

## GTF2I Antibody (monoclonal) (M01)

Mouse monoclonal antibody raised against a full length recombinant GTF2I.

Catalog # AT2289a

### Product Information

---

<b>Application</b>	WB, IHC, IF, E
<b>Primary Accession</b>	<a href="#">P78347</a>
<b>Other Accession</b>	<a href="#">BC004472</a>
<b>Reactivity</b>	Human
<b>Host</b>	mouse
<b>Clonality</b>	monoclonal
<b>Isotype</b>	IgG2a Kappa
<b>Clone Names</b>	3E3
<b>Calculated MW</b>	112416

### Additional Information

---

<b>Gene ID</b>	2969
<b>Other Names</b>	General transcription factor II-I, GTFII-I, TFII-I, Bruton tyrosine kinase-associated protein 135, BAP-135, BTK-associated protein 135, SRF-Phox1-interacting protein, SPIN, Williams-Beuren syndrome chromosomal region 6 protein, GTF2I, BAP135, WBSCR6
<b>Target/Specificity</b>	GTF2I (AAH04472.1, 36 a.a. ~ 274 a.a) full-length recombinant protein with GST tag. MW of the GST tag alone is 26 KDa.
<b>Dilution</b>	WB~~1:500~1000 IHC~~1:100~500 IF~~1:50~200 E~~N/A
<b>Format</b>	Clear, colorless solution in phosphate buffered saline, pH 7.2 .
<b>Storage</b>	Store at -20°C or lower. Aliquot to avoid repeated freezing and thawing.
<b>Precautions</b>	GTF2I Antibody (monoclonal) (M01) is for research use only and not for use in diagnostic or therapeutic procedures.

### Background

---

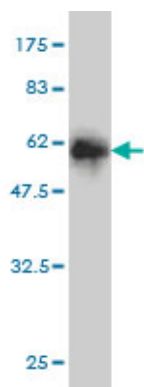
This gene encodes a multifunctional phosphoprotein with roles in transcription and signal transduction. It is deleted in Williams-Beuren syndrome, a multisystem developmental disorder caused by the deletion of contiguous genes at chromosome 7q11.23. Alternative splicing results in multiple transcript variants. Related pseudogenes have been identified on chromosomes 7, 13 and 21.

### References

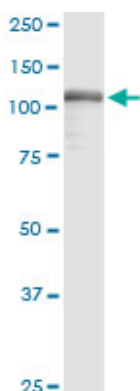
---

1. An SNP in an ultraconserved regulatory element affects Dlx5/Dlx6 regulation in the forebrain. Poitras L, Yu M, Lesage-Pelletier C, Macdonald RB, Gagne JP, Hatch G, Kelly I, Hamilton SP, Rubenstein JL, Poirier GG, Ekker M. Development. 2010 Sep;137(18):3089-97. Epub 2010 Aug 11.

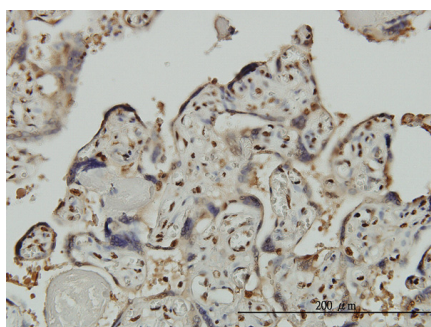
## Images



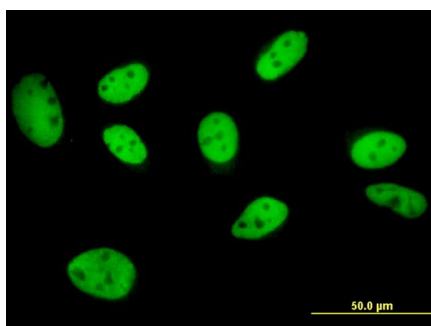
Antibody Reactive Against Recombinant Protein. Western Blot detection against Immunogen (52.03 KDa) .



GTF2I monoclonal antibody (M01), clone 3E2. Western Blot analysis of GTF2I expression in human colon.

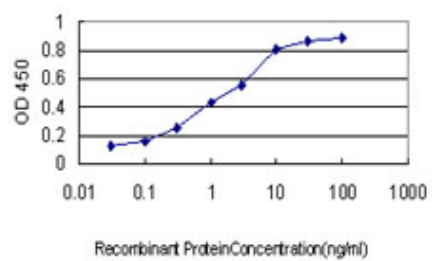


Immunoperoxidase of monoclonal antibody to GTF2I on formalin-fixed paraffin-embedded human placenta. [antibody concentration 3 µg/ml]



Immunofluorescence of monoclonal antibody to GTF2I on HeLa cell . [antibody concentration 10 µg/ml]

Detection limit for recombinant GST tagged GTF2I is approximately 0.03 ng/ml as a capture antibody.



Please note: All products are 'FOR RESEARCH USE ONLY. NOT FOR USE IN DIAGNOSTIC OR THERAPEUTIC PROCEDURES'.