

GYG2 Antibody (monoclonal) (M04)

Mouse monoclonal antibody raised against a partial recombinant GYG2.

Catalog # AT2304a

Product Information

| | |
|--------------------------|---------------------------|
| Application | WB |
| Primary Accession | O15488 |
| Other Accession | NM_003918 |
| Reactivity | Human |
| Host | mouse |
| Clonality | monoclonal |
| Isotype | IgG2a Kappa |
| Clone Names | 3D10 |
| Calculated MW | 55184 |

Additional Information

| | |
|---------------------------|--|
| Gene ID | 8908 |
| Other Names | Glycogenin-2, GN-2, GN2, GYG2 |
| Target/Specificity | GYG2 (NP_003909, 392 a.a. ~ 501 a.a) partial recombinant protein with GST tag. MW of the GST tag alone is 26 KDa. |
| Dilution | WB~~1:500~1000 |
| Format | Clear, colorless solution in phosphate buffered saline, pH 7.2 . |
| Storage | Store at -20°C or lower. Aliquot to avoid repeated freezing and thawing. |
| Precautions | GYG2 Antibody (monoclonal) (M04) is for research use only and not for use in diagnostic or therapeutic procedures. |

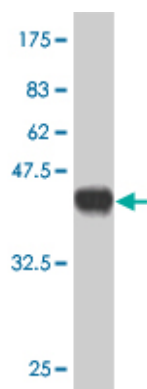
Background

This gene encodes a member of the the glycogenin family. Glycogenin is a self-glucosylating protein involved in the initiation reactions of glycogen biosynthesis. A gene on chromosome 3 encodes the muscle glycogenin and this X-linked gene encodes the glycogenin mainly present in liver; both are involved in blood glucose homeostasis. This gene has a short version on chromosome Y, which is 3' truncated and can not make a functional protein. Multiple alternatively spliced transcript variants encoding different isoforms have been identified.

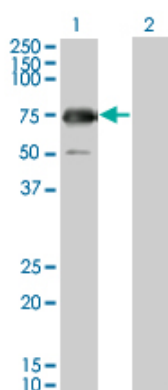
References

1.LC-MS/MS characterization of combined glycogenin-1 and glycogenin-2 enzymatic activities reveals their

Images



Antibody Reactive Against Recombinant Protein. Western Blot detection against Immunogen (37.84 KDa) .



Western Blot analysis of GYG2 expression in transfected 293T cell line by GYG2 monoclonal antibody (M04), clone 3D10.

Lane 1: GYG2 transfected lysate(55.212 KDa).
Lane 2: Non-transfected lysate.

Please note: All products are 'FOR RESEARCH USE ONLY. NOT FOR USE IN DIAGNOSTIC OR THERAPEUTIC PROCEDURES'.