

## HCLS1 Antibody (monoclonal) (M02)

Mouse monoclonal antibody raised against a partial recombinant HCLS1.

Catalog # AT2329a

### Product Information

---

<b>Application</b>	WB, IHC, E
<b>Primary Accession</b>	<a href="#">P14317</a>
<b>Other Accession</b>	<a href="#">BC016758</a>
<b>Reactivity</b>	Human
<b>Host</b>	mouse
<b>Clonality</b>	monoclonal
<b>Isotype</b>	IgG1 Kappa
<b>Clone Names</b>	1A8
<b>Calculated MW</b>	54014

### Additional Information

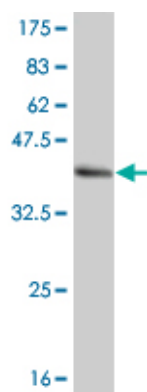
---

<b>Gene ID</b>	3059
<b>Other Names</b>	Hematopoietic lineage cell-specific protein, Hematopoietic cell-specific LYN substrate 1, LckBP1, p75, HCLS1, HS1
<b>Target/Specificity</b>	HCLS1 (AAH16758, 266 a.a. ~ 355 a.a) partial recombinant protein with GST tag. MW of the GST tag alone is 26 KDa.
<b>Dilution</b>	WB~~1:500~1000 IHC~~1:100~500 E~~N/A
<b>Format</b>	Clear, colorless solution in phosphate buffered saline, pH 7.2 .
<b>Storage</b>	Store at -20°C or lower. Aliquot to avoid repeated freezing and thawing.
<b>Precautions</b>	HCLS1 Antibody (monoclonal) (M02) is for research use only and not for use in diagnostic or therapeutic procedures.

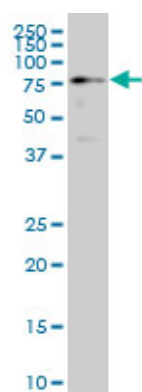
### References

---

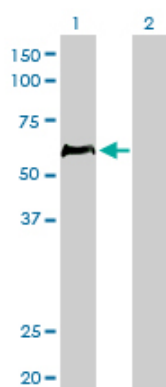
HS1 complexes with cytoskeleton adapters in normal and malignant chronic lymphocytic leukemia B cells. Muzio M, et al. Leukemia, 2007 Sep. PMID 17508001. A protein-protein interaction network for human inherited ataxias and disorders of Purkinje cell degeneration. Lim J, et al. Cell, 2006 May 19. PMID 16713569. Towards a proteome-scale map of the human protein-protein interaction network. Rual JF, et al. Nature, 2005 Oct 20. PMID 16189514. The coiled-coil domain is required for HS1 to bind to F-actin and activate Arp2/3 complex. Hao JJ, et al. J Biol Chem, 2005 Nov 11. PMID 16157603. Quantitative phosphoproteome analysis using a dendrimer conjugation chemistry and tandem mass spectrometry. Tao WA, et al. Nat Methods, 2005 Aug. PMID 16094384.



Antibody Reactive Against Recombinant Protein. Western Blot detection against Immunogen (35.64 KDa) .

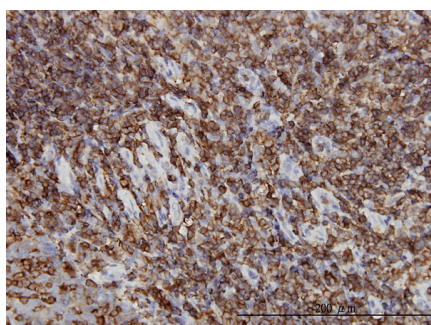


HCLS1 monoclonal antibody (M02), clone 1A8 Western Blot analysis of HCLS1 expression in K-562 ( (Cat # AT2329a )



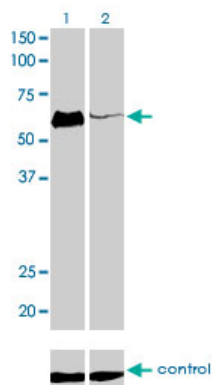
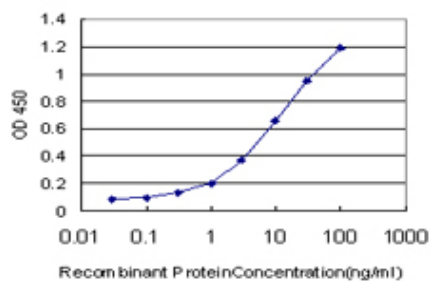
Western Blot analysis of HCLS1 expression in transfected 293T cell line by HCLS1 monoclonal antibody (M02), clone 1A8.

Lane 1: HCLS1 transfected lysate(54 KDa).  
Lane 2: Non-transfected lysate.

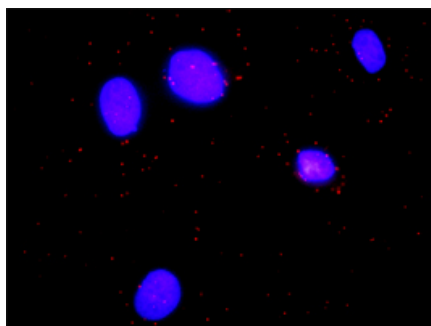


Immunoperoxidase of monoclonal antibody to HCLS1 on formalin-fixed paraffin-embedded human tonsil. [antibody concentration 3 ug/ml]

Detection limit for recombinant GST tagged HCLS1 is approximately 0.1ng/ml as a capture antibody.



Western blot analysis of HCLS1 over-expressed 293 cell line, cotransfected with HCLS1 Validated Chimera RNAi (Cat # AT2329a )



Proximity Ligation Analysis of protein-protein interactions between CASP3 and HCLS1. HeLa cells were stained with anti-CASP3 rabbit purified polyclonal 1:1200 and anti-HCLS1 mouse monoclonal antibody 1:50. Each red dot represents the detection of protein-protein interaction complex, and nuclei were counterstained with DAPI (blue).

Please note: All products are 'FOR RESEARCH USE ONLY. NOT FOR USE IN DIAGNOSTIC OR THERAPEUTIC PROCEDURES'.