

HCLS1 Antibody (monoclonal) (M06)

Mouse monoclonal antibody raised against a partial recombinant HCLS1.

Catalog # AT2330a

Product Information

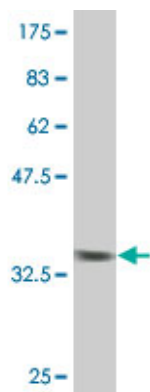
Application	WB, IHC, IF, E
Primary Accession	P14317
Other Accession	BC016758
Reactivity	Human
Host	mouse
Clonality	monoclonal
Isotype	IgG1 Kappa
Clone Names	2A9
Calculated MW	54014

Additional Information

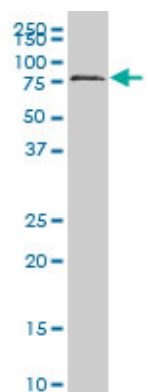
Gene ID	3059
Other Names	Hematopoietic lineage cell-specific protein, Hematopoietic cell-specific LYN substrate 1, LckBP1, p75, HCLS1, HS1
Target/Specificity	HCLS1 (AAH16758, 266 a.a. ~ 355 a.a) partial recombinant protein with GST tag. MW of the GST tag alone is 26 KDa.
Dilution	WB~~1:500~1000 IHC~~1:100~500 IF~~1:50~200 E~~N/A
Format	Clear, colorless solution in phosphate buffered saline, pH 7.2 .
Storage	Store at -20°C or lower. Aliquot to avoid repeated freezing and thawing.
Precautions	HCLS1 Antibody (monoclonal) (M06) is for research use only and not for use in diagnostic or therapeutic procedures.

References

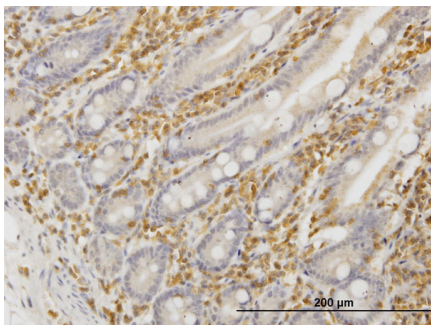
HS1 complexes with cytoskeleton adapters in normal and malignant chronic lymphocytic leukemia B cells. Muzio M, et al. Leukemia, 2007 Sep. PMID 17508001. A protein-protein interaction network for human inherited ataxias and disorders of Purkinje cell degeneration. Lim J, et al. Cell, 2006 May 19. PMID 16713569. Towards a proteome-scale map of the human protein-protein interaction network. Rual JF, et al. Nature, 2005 Oct 20. PMID 16189514. The coiled-coil domain is required for HS1 to bind to F-actin and activate Arp2/3 complex. Hao JJ, et al. J Biol Chem, 2005 Nov 11. PMID 16157603. Quantitative phosphoproteome analysis using a dendrimer conjugation chemistry and tandem mass spectrometry. Tao WA, et al. Nat Methods, 2005 Aug. PMID 16094384.



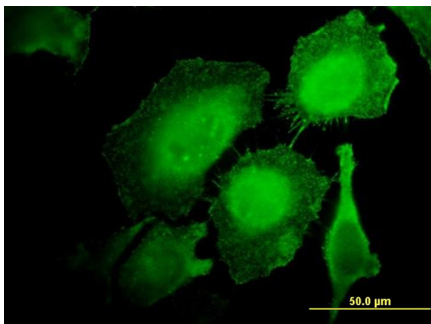
Antibody Reactive Against Recombinant Protein. Western Blot detection against Immunogen (35.64 KDa) .



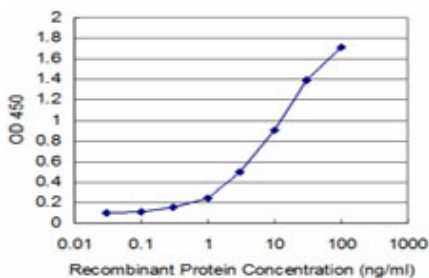
HCLS1 monoclonal antibody (M06), clone 2A9 Western Blot analysis of HCLS1 expression in K-562 ((Cat # AT2330a)



Immunoperoxidase of monoclonal antibody to HCLS1 on formalin-fixed paraffin-embedded human small Intestine. [antibody concentration 3 ug/ml]



Immunofluorescence of monoclonal antibody to HCLS1 on HeLa cell. [antibody concentration 10 ug/ml]



Detection limit for recombinant GST tagged HCLS1 is approximately 0.3ng/ml as a capture antibody.

Please note: All products are 'FOR RESEARCH USE ONLY. NOT FOR USE IN DIAGNOSTIC OR THERAPEUTIC PROCEDURES'.