

HECW2 Antibody (monoclonal) (M01)

Mouse monoclonal antibody raised against a partial recombinant HECW2.

Catalog # AT2346a

Product Information

Application	WB, E
Primary Accession	Q9P2P5
Other Accession	NM_020760
Reactivity	Human
Host	mouse
Clonality	monoclonal
Isotype	IgG2b Kappa
Clone Names	5H1
Calculated MW	175769

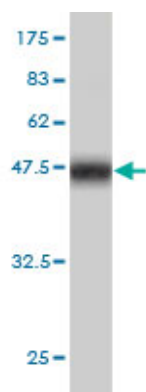
Additional Information

Gene ID	57520
Other Names	E3 ubiquitin-protein ligase HECW2, 632-, HECT, C2 and WW domain-containing protein 2, NEDD4-like E3 ubiquitin-protein ligase 2, HECW2, KIAA1301, NEDL2
Target/Specificity	HECW2 (NP_065811, 637 a.a. ~ 745 a.a) partial recombinant protein with GST tag. MW of the GST tag alone is 26 KDa.
Dilution	WB~~1:500~1000 E~~N/A
Format	Clear, colorless solution in phosphate buffered saline, pH 7.2 .
Storage	Store at -20°C or lower. Aliquot to avoid repeated freezing and thawing.
Precautions	HECW2 Antibody (monoclonal) (M01) is for research use only and not for use in diagnostic or therapeutic procedures.

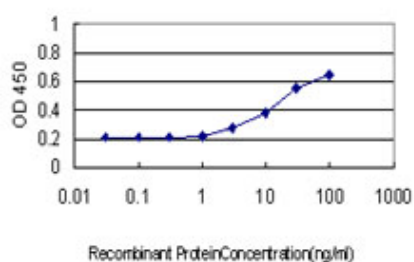
References

Personalized smoking cessation: interactions between nicotine dose, dependence and quit-success genotype score. Rose JE, et al. Mol Med, 2010 Jul-Aug. PMID 20379614. The status, quality, and expansion of the NIH full-length cDNA project: the Mammalian Gene Collection (MGC). Gerhard DS, et al. Genome Res, 2004 Oct. PMID 15489334. A novel HECT-type E3 ubiquitin ligase, NEDL2, stabilizes p73 and enhances its transcriptional activity. Miyazaki K, et al. Biochem Biophys Res Commun, 2003 Aug 15. PMID 12890487. Generation and initial analysis of more than 15,000 full-length human and mouse cDNA sequences. Strausberg RL, et al. Proc Natl Acad Sci U S A, 2002 Dec 24. PMID 12477932. Prediction of the coding sequences of unidentified human genes. XVI. The complete sequences of 150 new cDNA clones from brain which code for large proteins in vitro. Nagase T, et al. DNA Res, 2000 Feb 28. PMID 10718198.

Images



Antibody Reactive Against Recombinant Protein. Western Blot detection against Immunogen (37.73 KDa) .



Detection limit for recombinant GST tagged HECW2 is approximately 0.3ng/ml as a capture antibody.

Please note: All products are 'FOR RESEARCH USE ONLY. NOT FOR USE IN DIAGNOSTIC OR THERAPEUTIC PROCEDURES'.