

HFE Antibody (monoclonal) (M01)

Mouse monoclonal antibody raised against a partial recombinant HFE.

Catalog # AT2361a

Product Information

Application	WB, IF, E
Primary Accession	Q30201
Other Accession	NM_000410
Reactivity	Human
Host	mouse
Clonality	monoclonal
Isotype	IgG1 Kappa
Clone Names	1G12
Calculated MW	40108

Additional Information

Gene ID	3077
Other Names	Hereditary hemochromatosis protein, HLA-H, HFE, HLAH
Target/Specificity	HFE (NP_000401, 115 a.a. ~ 205 a.a) partial recombinant protein with GST tag. MW of the GST tag alone is 26 KDa.
Dilution	WB~~1:500~1000 IF~~1:50~200 E~~N/A
Format	Clear, colorless solution in phosphate buffered saline, pH 7.2 .
Storage	Store at -20°C or lower. Aliquot to avoid repeated freezing and thawing.
Precautions	HFE Antibody (monoclonal) (M01) is for research use only and not for use in diagnostic or therapeutic procedures.

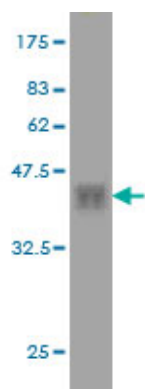
Background

The protein encoded by this gene is a membrane protein that is similar to MHC class I-type proteins and associates with beta2-microglobulin (beta2M). It is thought that this protein functions to regulate iron absorption by regulating the interaction of the transferrin receptor with transferrin. The iron storage disorder, hereditary haemochromatosis, is a recessive genetic disorder that results from defects in this gene. At least nine alternatively spliced variants have been described for this gene. Additional variants have been found but their full-length nature has not been determined.

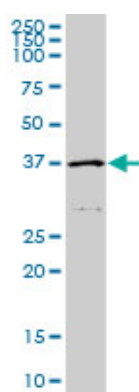
References

- 1.Hemochromatosis Enhances Tumor Progression via Upregulation of Intracellular Iron in Head and Neck

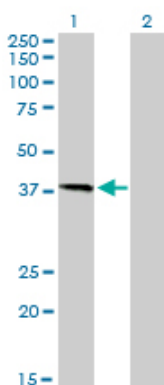
Images



Antibody Reactive Against Recombinant Protein. Western Blot detection against Immunogen (35.75 KDa) .

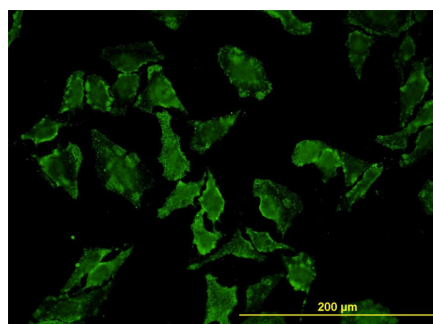


HFE monoclonal antibody (M01), clone 1G12. Western Blot analysis of HFE expression in A-431.



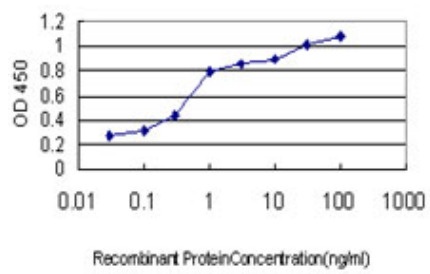
Western Blot analysis of HFE expression in transfected 293T cell line by HFE monoclonal antibody (M01), clone 1G12.

Lane 1: HFE transfected lysate(40.1 KDa).
Lane 2: Non-transfected lysate.



Immunofluorescence of monoclonal antibody to HFE on HeLa cell. [antibody concentration 10 ug/ml]

Detection limit for recombinant GST tagged HFE is approximately 0.03ng/ml as a capture antibody.



Please note: All products are 'FOR RESEARCH USE ONLY. NOT FOR USE IN DIAGNOSTIC OR THERAPEUTIC PROCEDURES'.