

HMG20B Antibody (monoclonal) (M01)

Mouse monoclonal antibody raised against a partial recombinant HMG20B.

Catalog # AT2382a

Product Information

Application	WB, IHC, IF
Primary Accession	Q9P0W2
Other Accession	NM_006339
Reactivity	Human
Host	Mouse
Clonality	monoclonal
Isotype	IgG2a Kappa
Clone Names	1F6
Calculated MW	35813

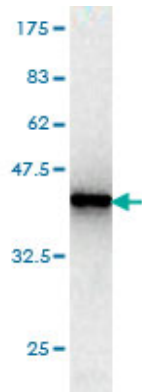
Additional Information

Gene ID	10362
Other Names	SWI/SNF-related matrix-associated actin-dependent regulator of chromatin subfamily E member 1-related, SMARCE1-related protein, BRCA2-associated factor 35, HMG box-containing protein 20B, HMG domain-containing protein 2, HMG domain-containing protein HMGX2, Sox-like transcriptional factor, Structural DNA-binding protein BRAF35, HMG20B, BRAF35, HMGX2, HMGXB2, SMARCE1R
Target/Specificity	HMG20B (NP_006330, 1 a.a. ~ 109 a.a) partial recombinant protein with GST tag. MW of the GST tag alone is 26 KDa.
Dilution	WB~~1:500~1000 IHC~~1:100~500 IF~~1:50~200
Format	Clear, colorless solution in phosphate buffered saline, pH 7.2 .
Storage	Store at -20°C or lower. Aliquot to avoid repeated freezing and thawing.
Precautions	HMG20B Antibody (monoclonal) (M01) is for research use only and not for use in diagnostic or therapeutic procedures.

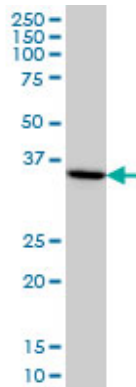
References

1.Control of neuronal differentiation by sumoylation of BRAF35, a subunit of the LSD1-CoREST histone demethylase complex.Ceballos-Chavez M, Rivero S, Garcia-Gutierrez P, Rodriguez-Paredes M, Garcia-Dominguez M, Bhattacharya S, Reyes JC.Proc Natl Acad Sci U S A. 2012 May 8.

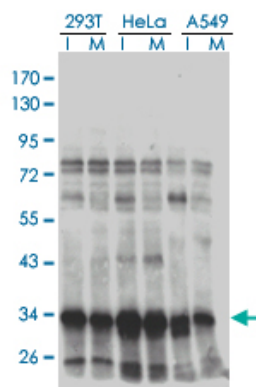
Images



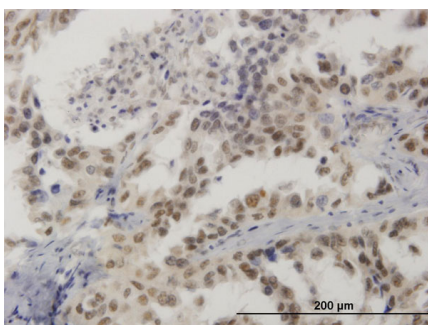
Antibody Reactive Against Recombinant Protein. Western Blot detection against Immunogen (37.73 KDa) .



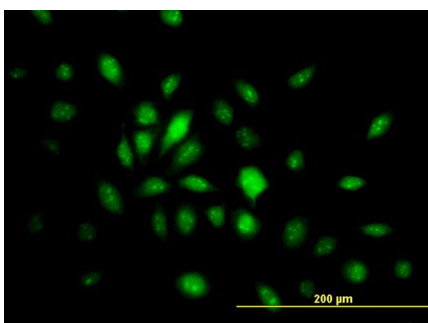
HMG20B monoclonal antibody (M01), clone IF6 Western Blot analysis of HMG20B expression in HeLa (Cat # AT2382a)



Western blot analysis of HMG20B in extracts from 293T, HeLa and A549 cell using anti-HMG20B monoclonal antibody.



Immunoperoxidase of monoclonal antibody to HMG20B on formalin-fixed paraffin-embedded human lung cancer. [antibody concentration 1.8 ug/ml]



Immunofluorescence of monoclonal antibody to HMG20B on HeLa cell. [antibody concentration 10 ug/ml]

Please note: All products are 'FOR RESEARCH USE ONLY. NOT FOR USE IN DIAGNOSTIC OR THERAPEUTIC PROCEDURES'.