

# HOXC10 Antibody (monoclonal) (M02)

Mouse monoclonal antibody raised against a partial recombinant HOXC10.

Catalog # AT2417a

## Product Information

---

Application	WB, E
Primary Accession	<a href="#">Q9NYD6</a>
Other Accession	<a href="#">BC001293</a>
Reactivity	Human
Host	mouse
Clonality	monoclonal
Isotype	IgG2b Kappa
Clone Names	3F10
Calculated MW	38073

## Additional Information

---

Gene ID	3226
Other Names	Homeobox protein Hox-C10, Homeobox protein Hox-3I, HOXC10, HOX3I
Target/Specificity	HOXC10 (AAH01293, 158 a.a. ~ 257 a.a) partial recombinant protein with GST tag. MW of the GST tag alone is 26 KDa.
Dilution	WB~~1:500~1000 E~~N/A
Format	Clear, colorless solution in phosphate buffered saline, pH 7.2 .
Storage	Store at -20°C or lower. Aliquot to avoid repeated freezing and thawing.
Precautions	HOXC10 Antibody (monoclonal) (M02) is for research use only and not for use in diagnostic or therapeutic procedures.

## Background

---

This gene belongs to the homeobox family of genes. The homeobox genes encode a highly conserved family of transcription factors that play an important role in morphogenesis in all multicellular organisms. Mammals possess four similar homeobox gene clusters, HOXA, HOXB, HOXC and HOXD, which are located on different chromosomes and consist of 9 to 11 genes arranged in tandem. This gene is one of several homeobox HOXC genes located in a cluster on chromosome 12. The protein level is controlled during cell differentiation and proliferation, which may indicate this protein has a role in origin activation.

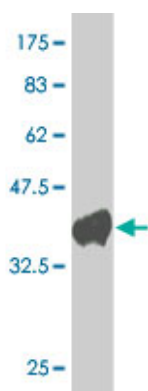
## References

---

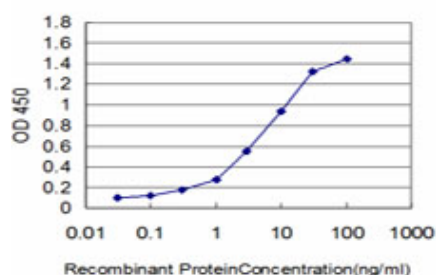
HOXC10 as a potential marker for discriminating between amnion- and decidua-derived mesenchymal stem

cells. Hwang JH, et al. Cloning Stem Cells, 2009 Jun. PMID 19522674. Gene expression analysis of preinvasive and invasive cervical squamous cell carcinomas identifies HOXC10 as a key mediator of invasion. Zhai Y, et al. Cancer Res, 2007 Nov 1. PMID 17974957. Dynamic profiling of the post-translational modifications and interaction partners of epidermal growth factor receptor signaling after stimulation by epidermal growth factor using Extended Range Proteomic Analysis (ERPA). Wu SL, et al. Mol Cell Proteomics, 2006 Sep. PMID 16799092. The status, quality, and expansion of the NIH full-length cDNA project: the Mammalian Gene Collection (MGC). Gerhard DS, et al. Genome Res, 2004 Oct. PMID 15489334. Early mitotic degradation of the homeoprotein HOXC10 is potentially linked to cell cycle progression. Gabellini D, et al. EMBO J, 2003 Jul 15. PMID 12853486.

## Images



Antibody Reactive Against Recombinant Protein. Western Blot detection against Immunogen (36.63 KDa) .



Detection limit for recombinant GST tagged HOXC10 is approximately 0.1 ng/ml as a capture antibody.

Please note: All products are 'FOR RESEARCH USE ONLY. NOT FOR USE IN DIAGNOSTIC OR THERAPEUTIC PROCEDURES'.