

# HPX Antibody (monoclonal) (M01)

Mouse monoclonal antibody raised against a full length recombinant HPX.

Catalog # AT2435a

## Product Information

---

<b>Application</b>	WB, IP, E
<b>Primary Accession</b>	<a href="#">P02790</a>
<b>Other Accession</b>	<a href="#">BC005395</a>
<b>Reactivity</b>	Human
<b>Host</b>	mouse
<b>Clonality</b>	monoclonal
<b>Isotype</b>	IgG2b Kappa
<b>Clone Names</b>	3A9-1A9
<b>Calculated MW</b>	51676

## Additional Information

---

<b>Gene ID</b>	3263
<b>Other Names</b>	Hemopexin, Beta-1B-glycoprotein, HPX
<b>Target/Specificity</b>	HPX (AAH05395, 1 a.a. ~ 254 a.a) full-length recombinant protein with GST tag. MW of the GST tag alone is 26 KDa.
<b>Dilution</b>	WB~~1:500~1000 IP~~N/A E~~N/A
<b>Format</b>	Clear, colorless solution in phosphate buffered saline, pH 7.2 .
<b>Storage</b>	Store at -20°C or lower. Aliquot to avoid repeated freezing and thawing.
<b>Precautions</b>	HPX Antibody (monoclonal) (M01) is for research use only and not for use in diagnostic or therapeutic procedures.

## Background

---

This gene encodes a plasma glycoprotein that binds heme with high affinity. The encoded protein is an acute phase protein that transports heme from the plasma to the liver and may be involved in protecting cells from oxidative stress.

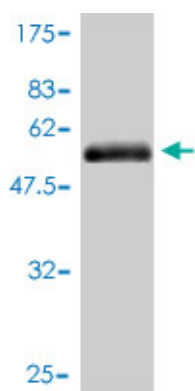
## References

---

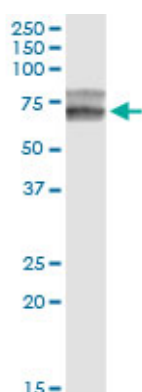
Variation at the NFATC2 Locus Increases the Risk of Thiazolinedione-Induced Edema in the Diabetes REduction Assessment with ramipril and rosiglitazone Medication (DREAM) Study. Bailey SD, et al. Diabetes Care, 2010 Jul 13. PMID 20628086.MMP20 hemopexin domain mutation in amelogenesis imperfecta. Lee SK, et al. J Dent Res, 2010 Jan. PMID 19966041.Gene-centric association signals for lipids and apolipoproteins

identified via the HumanCVD BeadChip. Talmud PJ, et al. Am J Hum Genet, 2009 Nov. PMID 19913121. Proteomics-derived cerebrospinal fluid markers of autopsy-confirmed Alzheimer's disease. Roher AE, et al. Biomarkers, 2009 Nov. PMID 19863188. Chromatographically distinguishable heme insertion isoforms of human hemopexin. Mauk MR, et al. Biochemistry, 2007 Dec 25. PMID 18044975.

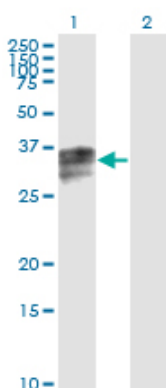
## Images



Antibody Reactive Against Recombinant Protein. Western Blot detection against Immunogen (53.68 KDa) .

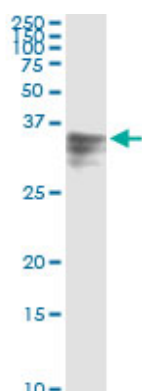


HPX monoclonal antibody (M01), clone 3A9-1A9. Western Blot analysis of HPX expression in human liver.

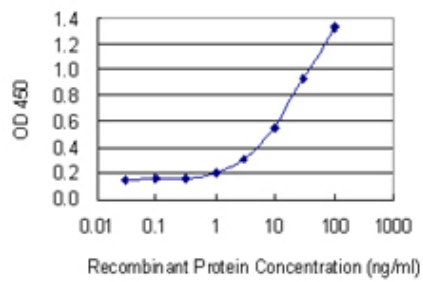


Western Blot analysis of HPX expression in transfected 293T cell line by HPX monoclonal antibody (M01), clone 3A9-1A9.

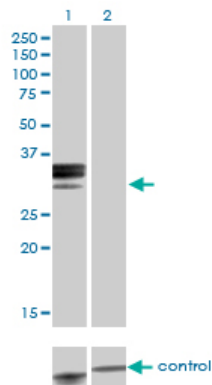
Lane 1: HPX transfected lysate (Predicted MW: 28.6 KDa).  
Lane 2: Non-transfected lysate.



Immunoprecipitation of HPX transfected lysate using anti-HPX monoclonal antibody and Protein A Magnetic Bead ([U0007](#)), and immunoblotted with HPX MaxPab rabbit polyclonal antibody.



Detection limit for recombinant GST tagged HPX is 0.3 ng/ml as a capture antibody.



Western blot analysis of HPX over-expressed 293 cell line, cotransfected with HPX Validated Chimera RNAi (Cat # AT2435a)

Please note: All products are 'FOR RESEARCH USE ONLY. NOT FOR USE IN DIAGNOSTIC OR THERAPEUTIC PROCEDURES'.