

# HSD3B1 Antibody (monoclonal) (M01)

Mouse monoclonal antibody raised against a full length recombinant HSD3B1.

Catalog # AT2439a

## Product Information

---

<b>Application</b>	WB, IHC
<b>Primary Accession</b>	<a href="#">P14060</a>
<b>Other Accession</b>	<a href="#">BC031999</a>
<b>Reactivity</b>	Human
<b>Host</b>	mouse
<b>Clonality</b>	monoclonal
<b>Isotype</b>	IgG1 Kappa
<b>Clone Names</b>	3C11-D4
<b>Calculated MW</b>	42252

## Additional Information

---

<b>Gene ID</b>	3283
<b>Other Names</b>	3 beta-hydroxysteroid dehydrogenase/Delta 5-->4-isomerase type 1, 3 beta-hydroxysteroid dehydrogenase/Delta 5-->4-isomerase type I, 3-beta-HSD I, Trophoblast antigen FDO161G, 3-beta-hydroxy-Delta(5)-steroid dehydrogenase, 3-beta-hydroxy-5-ene steroid dehydrogenase, Progesterone reductase, Steroid Delta-isomerase, Delta-5-3-ketosteroid isomerase, HSD3B1, 3BH, HSDB3A
<b>Target/Specificity</b>	HSD3B1 (AAH31999.1, 1 a.a. ~ 373 a.a) full-length recombinant protein with GST tag. MW of the GST tag alone is 26 KDa.
<b>Dilution</b>	WB~~1:500~1000 IHC~~1.5ug/ml
<b>Format</b>	Clear, colorless solution in phosphate buffered saline, pH 7.2 .
<b>Storage</b>	Store at -20°C or lower. Aliquot to avoid repeated freezing and thawing.
<b>Precautions</b>	HSD3B1 Antibody (monoclonal) (M01) is for research use only and not for use in diagnostic or therapeutic procedures.

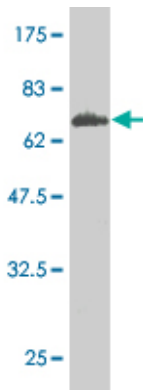
## References

---

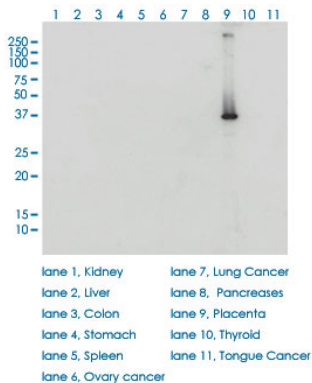
1.Gestational Trophoblastic Tumors and Related Tumor-Like Lesions.Shih IM, Mazur MT, Kurman RJ.Blaustein's Pathology of the Female Genital Tract 2011, 1075-1135, DOI: 10.1007/978-1-4419-0489-8\_202.Advances in the diagnosis of gestational trophoblastic tumors and tumor-like lesions.Mao TL, Shih IM.Expert Opin. Med. Diagn. (2009) 3(4):371-3803.Chorangiocarcinoma: A Case Report and Review of the Literature.Ariel I, Boldes R, Weintraub A, Reinus C, Beller U, Arbel R.Int J Gynecol Pathol.

2009 May;28(3):267-71.4.HSD3B1 as a novel trophoblast-associated marker that assists in the differential diagnosis of trophoblastic tumors and tumorlike lesions.Mao TL, Kurman RJ, Jeng YM, Huang W, Shih IM.Am J Surg Pathol. 2008 Feb;32(2):236-42.5.Trophogram, an immunohistochemistry-based algorithmic approach, in the differential diagnosis of trophoblastic tumors and tumorlike lesions.Shih IeM.Ann Diagn Pathol. 2007 Jun;11(3):228-34.

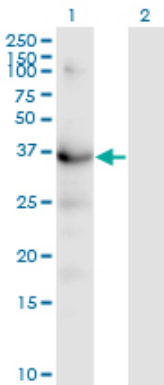
## Images



Antibody Reactive Against Recombinant Protein.Western Blot detection against Immunogen (66.77 KDa) .

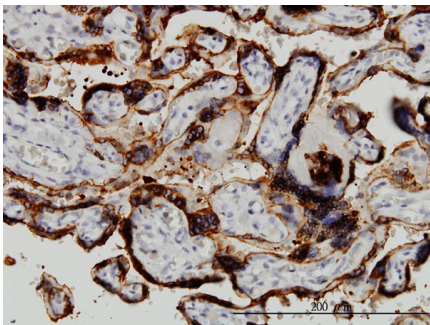


HSD3B1 monoclonal antibody (M01), clone 3C11-D4. Western Blot analysis of HSD3B1 expression in human placenta.



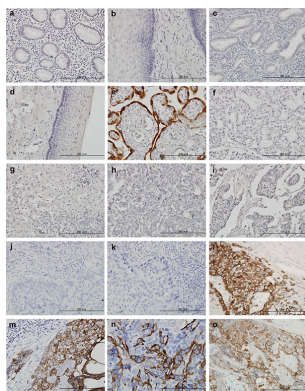
Western Blot analysis of HSD3B1 expression in transfected 293T cell line by HSD3B1 monoclonal antibody (M01), clone 3C11-D4.

Lane 1: HSD3B1 transfected lysate (Predicted MW: 42.3 KDa).  
Lane 2: Non-transfected lysate.



Immunoperoxidase of monoclonal antibody to HSD3B1 on formalin-fixed paraffin-embedded human placenta. [antibody concentration 3 ug/ml]

Immunohistochemical staining of various tissues with



hematoxylin and HSD3B1 antibody under high magnification.[antibody concentration 3 ug/ml]

( a ) Stomach

( b ) Esophagus

( c ) Endometrium

( d ) Uterine cervix

( e ) Placenta

( f ) Ovary, clear cell carcinoma

( g ) Hepatocellular carcinoma

( h ) Breast cancer

( i ) Colon adenocarcinoma

( j and k ) Cervical carcinoma

( l, m, and n ) Choriocarcinoma

( o ) Epithelioid trophoblastic tumor.

Please note: All products are 'FOR RESEARCH USE ONLY. NOT FOR USE IN DIAGNOSTIC OR THERAPEUTIC PROCEDURES'.