

HSPE1 Antibody (monoclonal) (M01)

Mouse monoclonal antibody raised against a full length recombinant HSPE1.

Catalog # AT2454a

Product Information

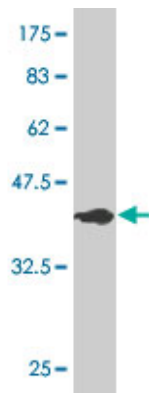
Application	WB, IF, E
Primary Accession	P61604
Other Accession	BC023518
Reactivity	Human
Host	mouse
Clonality	monoclonal
Isotype	IgG1 kappa
Clone Names	4C11-B11
Calculated MW	10932

Additional Information

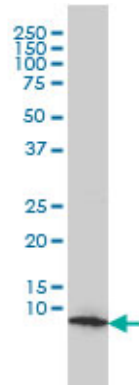
Gene ID	3336
Other Names	10 kDa heat shock protein, mitochondrial, Hsp10, 10 kDa chaperonin, Chaperonin 10, CPN10, Early-pregnancy factor, EPF, HSPE1
Target/Specificity	HSPE1 (AAH23518, 1 a.a. ~ 102 a.a) full-length recombinant protein with GST tag. MW of the GST tag alone is 26 KDa.
Dilution	WB~~1:500~1000 IF~~1:50~200 E~~N/A
Format	Clear, colorless solution in phosphate buffered saline, pH 7.2 .
Storage	Store at -20°C or lower. Aliquot to avoid repeated freezing and thawing.
Precautions	HSPE1 Antibody (monoclonal) (M01) is for research use only and not for use in diagnostic or therapeutic procedures.

Images

Antibody Reactive Against Recombinant Protein.Western Blot detection against Immunogen (36.96 KDa) .

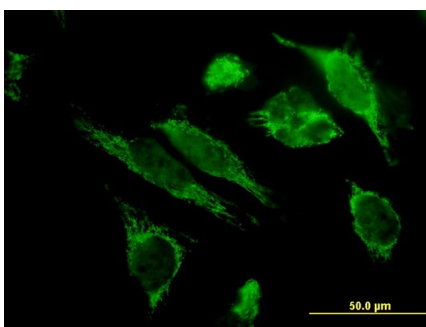
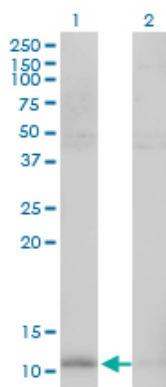


HSPE1 monoclonal antibody (M01), clone 4C11-B11
Western Blot analysis of HSPE1 expression in COLO 320
HSR ((Cat # AT2454a)

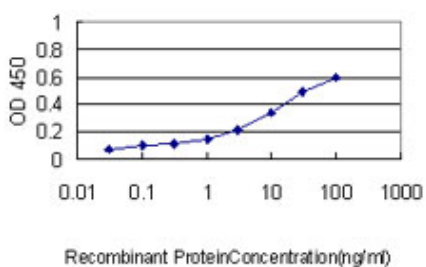


Western Blot analysis of HSPE1 expression in transfected
293T cell line by HSPE1 monoclonal antibody (M01), clone
4C11-B11.

Lane 1: HSPE1 transfected lysate(10.9 KDa).
Lane 2: Non-transfected lysate.



Immunofluorescence of monoclonal antibody to HSPE1
on HeLa cell. [antibody concentration 10 ug/ml]



Detection limit for recombinant GST tagged HSPE1 is
approximately 0.1ng/ml as a capture antibody.

Please note: All products are 'FOR RESEARCH USE ONLY. NOT FOR USE IN DIAGNOSTIC OR THERAPEUTIC PROCEDURES'.