

# IBRDC1 Antibody (monoclonal) (M01)

Mouse monoclonal antibody raised against a partial recombinant IBRDC1.

Catalog # AT2465a

## Product Information

---

<b>Application</b>	WB, IF
<b>Primary Accession</b>	<a href="#">Q8TC41</a>
<b>Other Accession</b>	<a href="#">NM_152553</a>
<b>Reactivity</b>	Human
<b>Host</b>	mouse
<b>Clonality</b>	monoclonal
<b>Isotype</b>	IgG2a Kappa
<b>Clone Names</b>	4B1
<b>Calculated MW</b>	59372

## Additional Information

---

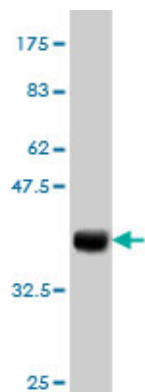
<b>Gene ID</b>	154214
<b>Other Names</b>	Probable E3 ubiquitin-protein ligase RNF217, 632-, IBR domain-containing protein 1, RING finger protein 217, RNF217, C6orf172, IBRDC1
<b>Target/Specificity</b>	IBRDC1 (NP_689766, 2 a.a. ~ 100 a.a) partial recombinant protein with GST tag. MW of the GST tag alone is 26 KDa.
<b>Dilution</b>	WB~~1:500~1000 IF~~1:50~200
<b>Format</b>	Clear, colorless solution in phosphate buffered saline, pH 7.2 .
<b>Storage</b>	Store at -20°C or lower. Aliquot to avoid repeated freezing and thawing.
<b>Precautions</b>	IBRDC1 Antibody (monoclonal) (M01) is for research use only and not for use in diagnostic or therapeutic procedures.

## References

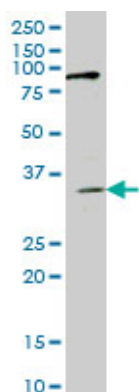
---

Personalized smoking cessation: interactions between nicotine dose, dependence and quit-success genotype score. Rose JE, et al. Mol Med, 2010 Jul-Aug. PMID 20379614.Candidate gene/loci studies in cleft lip/palate and dental anomalies finds novel susceptibility genes for clefts. Vieira AR, et al. Genet Med, 2008 Sep. PMID 18978678.The status, quality, and expansion of the NIH full-length cDNA project: the Mammalian Gene Collection (MGC). Gerhard DS, et al. Genome Res, 2004 Oct. PMID 15489334.Complete sequencing and characterization of 21,243 full-length human cDNAs. Ota T, et al. Nat Genet, 2004 Jan. PMID 14702039.The DNA sequence and analysis of human chromosome 6. Mungall AJ, et al. Nature, 2003 Oct 23. PMID 14574404.

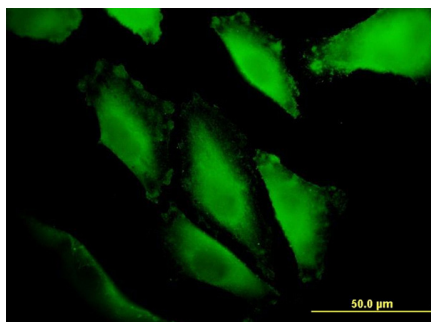
## Images



Antibody Reactive Against Recombinant Protein. Western Blot detection against Immunogen (36.63 KDa) .



IBRDC1 monoclonal antibody (M01), clone 4B1 Western Blot analysis of IBRDC1 expression in HepG2 ( (Cat # AT2465a )



Immunofluorescence of monoclonal antibody to IBRDC1 on HepG2 cell. [antibody concentration 10 ug/ml]

Please note: All products are 'FOR RESEARCH USE ONLY. NOT FOR USE IN DIAGNOSTIC OR THERAPEUTIC PROCEDURES'.