

ID1 Antibody (monoclonal) (M04)

Mouse monoclonal antibody raised against a full length recombinant ID1.

Catalog # AT2474a

Product Information

Application	WB, IF, E
Primary Accession	P41134
Other Accession	BC000613
Reactivity	Human
Host	mouse
Clonality	monoclonal
Isotype	IgG2a Kappa
Clone Names	4G11
Calculated MW	16133

Additional Information

Gene ID	3397
Other Names	DNA-binding protein inhibitor ID-1, Class B basic helix-loop-helix protein 24, bHLHb24, Inhibitor of DNA binding 1, Inhibitor of differentiation 1, ID1, BHLHB24, ID
Target/Specificity	ID1 (AAH00613.1, 1 a.a. ~ 155 a.a) full-length recombinant protein with GST tag. MW of the GST tag alone is 26 KDa.
Dilution	WB~~1:500~1000 IF~~1:50~200 E~~N/A
Format	Clear, colorless solution in phosphate buffered saline, pH 7.2 .
Storage	Store at -20°C or lower. Aliquot to avoid repeated freezing and thawing.
Precautions	ID1 Antibody (monoclonal) (M04) is for research use only and not for use in diagnostic or therapeutic procedures.

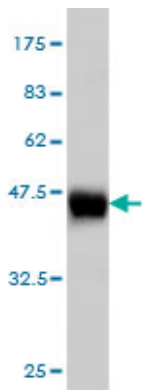
Background

The protein encoded by this gene is a helix-loop-helix (HLH) protein that can form heterodimers with members of the basic HLH family of transcription factors. The encoded protein has no DNA binding activity and therefore can inhibit the DNA binding and transcriptional activation ability of basic HLH proteins with which it interacts. This protein may play a role in cell growth, senescence, and differentiation. Two transcript variants encoding different isoforms have been found for this gene.

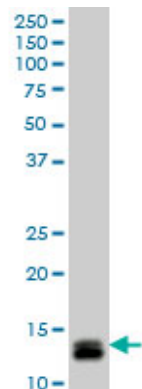
References

1.ID3 contributes to cerebrospinal fluid seeding and poor prognosis in medulloblastoma.Phi JH, Choi SA, Lim SH, Lee J, Wang KC, Park SH, Kim SKBMC Cancer. 2013 Jun 15;13:291. doi: 10.1186/1471-2407-13-291.

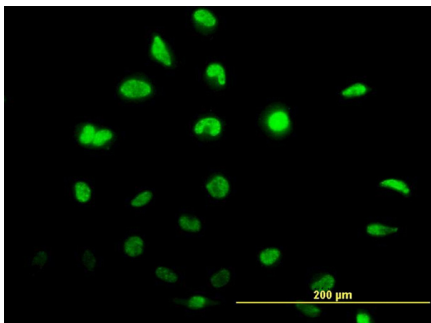
Images



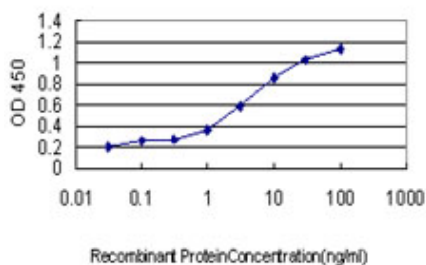
Antibody Reactive Against Recombinant Protein.Western Blot detection against Immunogen (42.79 KDa) .



ID1 monoclonal antibody (M04), clone 4G11 Western Blot analysis of ID1 expression in Y-79 ((Cat # AT2474a)



Immunofluorescence of monoclonal antibody to ID1 on HeLa cell. [antibody concentration 10 ug/ml]



Detection limit for recombinant GST tagged ID1 is approximately 0.03ng/ml as a capture antibody.

Please note: All products are 'FOR RESEARCH USE ONLY. NOT FOR USE IN DIAGNOSTIC OR THERAPEUTIC PROCEDURES'.