

IDH2 Antibody (monoclonal) (M01)

Mouse monoclonal antibody raised against a partial recombinant IDH2.

Catalog # AT2479a

Product Information

Application	WB, IHC, E
Primary Accession	P48735
Other Accession	NM_002168
Reactivity	Human
Host	mouse
Clonality	monoclonal
Isotype	IgG1 Kappa
Clone Names	5F11
Calculated MW	50909

Additional Information

Gene ID	3418
Other Names	Isocitrate dehydrogenase [NADP], mitochondrial, IDH, ICD-M, IDP, NADP(+)-specific ICDH, Oxalosuccinate decarboxylase, IDH2
Target/Specificity	IDH2 (NP_002159, 354 a.a. ~ 451 a.a) partial recombinant protein with GST tag. MW of the GST tag alone is 26 KDa.
Dilution	WB~~1:500~1000 IHC~~1:100~500 E~~N/A
Format	Clear, colorless solution in phosphate buffered saline, pH 7.2 .
Storage	Store at -20°C or lower. Aliquot to avoid repeated freezing and thawing.
Precautions	IDH2 Antibody (monoclonal) (M01) is for research use only and not for use in diagnostic or therapeutic procedures.

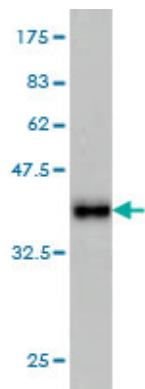
Background

Isocitrate dehydrogenases catalyze the oxidative decarboxylation of isocitrate to 2-oxoglutarate. These enzymes belong to two distinct subclasses, one of which utilizes NAD(+) as the electron acceptor and the other NADP(+). Five isocitrate dehydrogenases have been reported: three NAD(+)-dependent isocitrate dehydrogenases, which localize to the mitochondrial matrix, and two NADP(+)-dependent isocitrate dehydrogenases, one of which is mitochondrial and the other predominantly cytosolic. Each NADP(+)-dependent isozyme is a homodimer. The protein encoded by this gene is the NADP(+)-dependent isocitrate dehydrogenase found in the mitochondria. It plays a role in intermediary metabolism and energy production. This protein may tightly associate or interact with the pyruvate dehydrogenase complex.

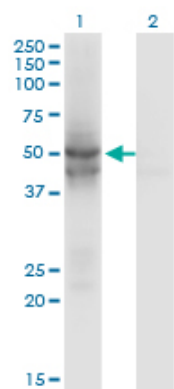
References

1. Altered global methylation and hydroxymethylation status in vulvar lichen sclerosus - further support for epigenetic mechanisms. Gambichler T, Terras S, Kreuter A, Skrygan MBr J Dermatol. 2013 Oct 27. doi: 10.1111/bjd.12702.

Images

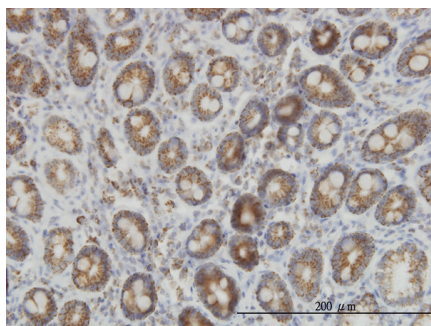


Antibody Reactive Against Recombinant Protein. Western Blot detection against Immunogen (36.52 KDa) .

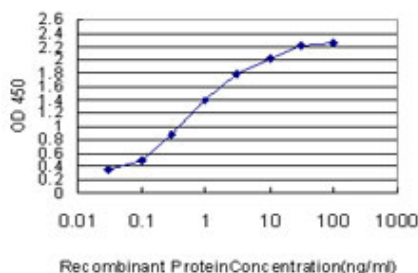


Western Blot analysis of IDH2 expression in transfected 293T cell line by IDH2 monoclonal antibody (M01), clone 5F11.

Lane 1: IDH2 transfected lysate (50.9 KDa).
Lane 2: Non-transfected lysate.



Immunoperoxidase of monoclonal antibody to IDH2 on formalin-fixed paraffin-embedded human colon. [antibody concentration 3 ug/ml]



Detection limit for recombinant GST tagged IDH2 is approximately 0.03 ng/ml as a capture antibody.

Please note: All products are 'FOR RESEARCH USE ONLY. NOT FOR USE IN DIAGNOSTIC OR THERAPEUTIC PROCEDURES'.