

IDI1 Antibody (monoclonal) (M01)

Mouse monoclonal antibody raised against a partial recombinant IDI1.

Catalog # AT2481a

Product Information

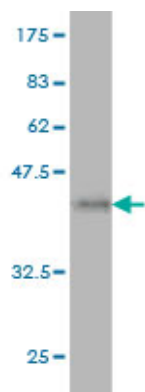
Application	WB, E
Primary Accession	Q13907
Other Accession	NM_004508
Reactivity	Human
Host	Mouse
Clonality	monoclonal
Isotype	IgG1 Kappa
Clone Names	6G10
Calculated MW	26319

Additional Information

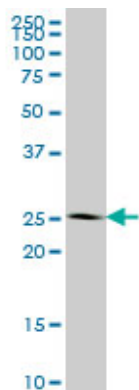
Gene ID	3422
Other Names	Isopentenyl-diphosphate Delta-isomerase 1, Isopentenyl pyrophosphate isomerase 1, IPP isomerase 1, IPPI1, IDI1
Target/Specificity	IDI1 (NP_004499, 175 a.a. ~ 283 a.a) partial recombinant protein with GST tag. MW of the GST tag alone is 26 KDa.
Dilution	WB~~1:500~1000 E~~N/A
Format	Clear, colorless solution in phosphate buffered saline, pH 7.2 .
Storage	Store at -20°C or lower. Aliquot to avoid repeated freezing and thawing.
Precautions	IDI1 Antibody (monoclonal) (M01) is for research use only and not for use in diagnostic or therapeutic procedures.

Images

Antibody Reactive Against Recombinant Protein.Western Blot detection against Immunogen (37.73 KDa) .

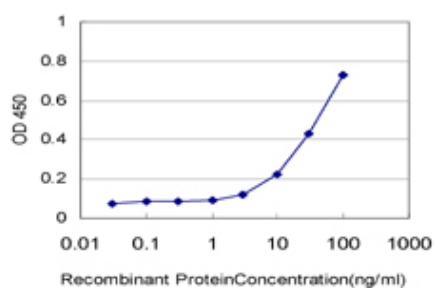
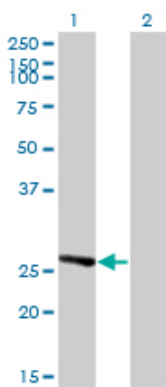


IDI1 monoclonal antibody (M01), clone 6G10 Western Blot analysis of IDI1 expression in HeLa (Cat # AT2481a)



Western Blot analysis of IDI1 expression in transfected 293T cell line by IDI1 monoclonal antibody (M01), clone 6G10.

Lane 1: IDI1 transfected lysate(26.5 KDa).
Lane 2: Non-transfected lysate.



Detection limit for recombinant GST tagged IDI1 is approximately 1ng/ml as a capture antibody.

Please note: All products are 'FOR RESEARCH USE ONLY. NOT FOR USE IN DIAGNOSTIC OR THERAPEUTIC PROCEDURES'.