

## IFI16 Antibody (monoclonal) (M03)

Mouse monoclonal antibody raised against a partial recombinant IFI16.

Catalog # AT2484a

### Product Information

---

<b>Application</b>	WB, IHC, IF, E
<b>Primary Accession</b>	<a href="#">Q16666</a>
<b>Other Accession</b>	<a href="#">BC017059</a>
<b>Reactivity</b>	Human
<b>Host</b>	Mouse
<b>Clonality</b>	monoclonal
<b>Isotype</b>	IgG2b Kappa
<b>Clone Names</b>	2E4
<b>Calculated MW</b>	88256

### Additional Information

---

<b>Gene ID</b>	3428
<b>Other Names</b>	Gamma-interferon-inducible protein 16, Ifi-16, Interferon-inducible myeloid differentiation transcriptional activator, IFI16, IFNGIP1
<b>Target/Specificity</b>	IFI16 (AAH17059, 630 a.a. ~ 729 a.a) partial recombinant protein with GST tag. MW of the GST tag alone is 26 KDa.
<b>Dilution</b>	WB~~1:500~1000 IHC~~1:100~500 IF~~1:50~200 E~~N/A
<b>Format</b>	Clear, colorless solution in phosphate buffered saline, pH 7.2 .
<b>Storage</b>	Store at -20°C or lower. Aliquot to avoid repeated freezing and thawing.
<b>Precautions</b>	IFI16 Antibody (monoclonal) (M03) is for research use only and not for use in diagnostic or therapeutic procedures.

### Background

---

This gene encodes a member of the HIN-200 (hematopoietic interferon-inducible nuclear antigens with 200 amino acid repeats) family of cytokines. The encoded protein contains domains involved in DNA binding, transcriptional regulation, and protein-protein interactions. The protein localizes to the nucleoplasm and nucleoli, and interacts with p53 and retinoblastoma-1. It modulates p53 function, and inhibits cell growth in the Ras/Raf signaling pathway.

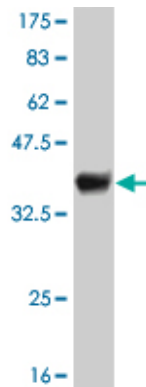
### References

---

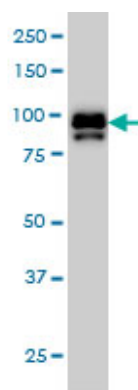
Evaluation of candidate stromal epithelial cross-talk genes identifies association between risk of serous

ovarian cancer and TERT, a cancer susceptibility hot-spot. Johnatty SE, et al. PLoS Genet, 2010 Jul 8. PMID 20628624. Association of IFI200 gene polymorphisms with susceptibility to systemic lupus erythematosus. Kimkong I, et al. J Rheumatol, 2010 Jul. PMID 20595294. Human cytomegalovirus pUL83 stimulates activity of the viral immediate-early promoter through its interaction with the cellular IFI16 protein. Cristea IM, et al. J Virol, 2010 Aug. PMID 20504932. Personalized smoking cessation: interactions between nicotine dose, dependence and quit-success genotype score. Rose JE, et al. Mol Med, 2010 Jul-Aug. PMID 20379614. Delta-like 1 contributes to cell growth by increasing the interferon-inducible protein 16 expression in hepatocellular carcinoma. Yu F, et al. Liver Int, 2010 May. PMID 20214740.

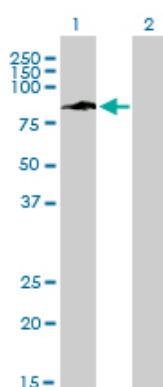
## Images



Antibody Reactive Against Recombinant Protein. Western Blot detection against Immunogen (36.74 KDa) .

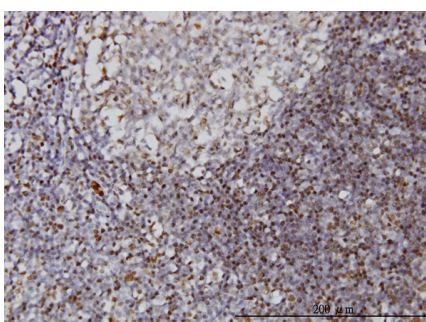


IFI16 monoclonal antibody (M03), clone 2E3 Western Blot analysis of IFI16 expression in HeLa S3 NE ( Cat # AT2484a )

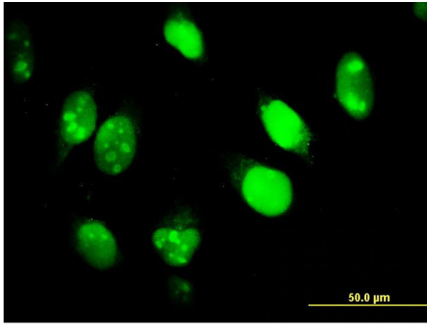


Western Blot analysis of IFI16 expression in transfected 293T cell line by IFI16 monoclonal antibody (M03), clone 2E3.

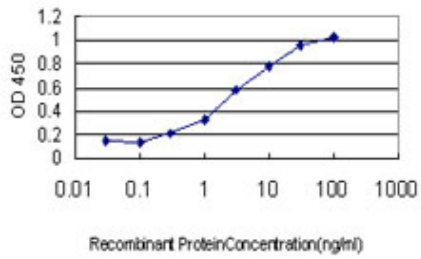
Lane 1: IFI16 transfected lysate(82 KDa).  
Lane 2: Non-transfected lysate.



Immunoperoxidase of monoclonal antibody to IFI16 on formalin-fixed paraffin-embedded human tonsil. [antibody concentration 3 ug/ml]



Immunofluorescence of monoclonal antibody to IFI16 on HeLa cell. [antibody concentration 10 ug/ml]



Detection limit for recombinant GST tagged IFI16 is approximately 0.3ng/ml as a capture antibody.

Please note: All products are 'FOR RESEARCH USE ONLY. NOT FOR USE IN DIAGNOSTIC OR THERAPEUTIC PROCEDURES'.