

## IFI35 Antibody (monoclonal) (M01)

Mouse monoclonal antibody raised against a partial recombinant IFI35.

Catalog # AT2486a

### Product Information

---

<b>Application</b>	WB, E
<b>Primary Accession</b>	<a href="#">P80217</a>
<b>Other Accession</b>	<a href="#">NM_005533</a>
<b>Reactivity</b>	Human
<b>Host</b>	mouse
<b>Clonality</b>	monoclonal
<b>Isotype</b>	IgG1 Kappa
<b>Clone Names</b>	3H6
<b>Calculated MW</b>	31546

### Additional Information

---

<b>Gene ID</b>	3430
<b>Other Names</b>	Interferon-induced 35 kDa protein, IFP 35, Ifi-35, IFI35, IFP35
<b>Target/Specificity</b>	IFI35 (NP_005524, 189 a.a. ~ 288 a.a) partial recombinant protein with GST tag. MW of the GST tag alone is 26 KDa.
<b>Dilution</b>	WB~~1:500~1000 E~~N/A
<b>Format</b>	Clear, colorless solution in phosphate buffered saline, pH 7.2 .
<b>Storage</b>	Store at -20°C or lower. Aliquot to avoid repeated freezing and thawing.
<b>Precautions</b>	IFI35 Antibody (monoclonal) (M01) is for research use only and not for use in diagnostic or therapeutic procedures.

### References

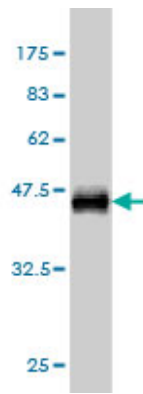
---

1.Identification of Interferon- $\alpha$  induced genes associated with antiviral activity in Daudi cells, and characterization of IFIT3 as a novel antiviral gene.Schmeisser H, Mejido J, Balinsky CA, Morrow AN, Clark CR, Zhao T, Zoon KC.J Virol. 2010 Aug 4. [Epub ahead of print]

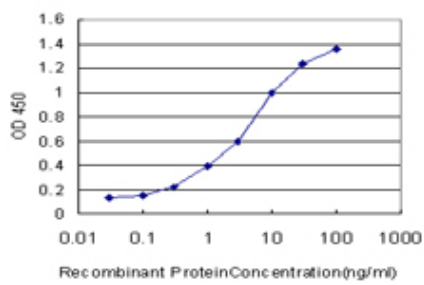
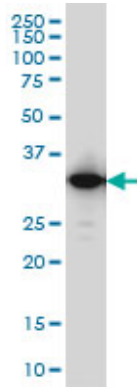
### Images

---

Antibody Reactive Against Recombinant Protein.Western Blot detection against Immunogen (36.74 KDa) .



IFI35 monoclonal antibody (M01), clone 3H6 Western Blot analysis of IFI35 expression in A-431 (Cat # AT2486a)



Detection limit for recombinant GST tagged IFI35 is approximately 0.1ng/ml as a capture antibody.

Please note: All products are 'FOR RESEARCH USE ONLY. NOT FOR USE IN DIAGNOSTIC OR THERAPEUTIC PROCEDURES'.