

## IFNA2 Antibody (monoclonal) (M34)

Mouse monoclonal antibody raised against a partial recombinant IFNA2.

Catalog # AT2487a

### Product Information

---

<b>Application</b>	WB
<b>Primary Accession</b>	<a href="#">P01563</a>
<b>Other Accession</b>	<a href="#">NM_000605</a>
<b>Reactivity</b>	Human
<b>Host</b>	mouse
<b>Clonality</b>	monoclonal
<b>Isotype</b>	IgG2a Kappa
<b>Clone Names</b>	1A11
<b>Calculated MW</b>	21578

### Additional Information

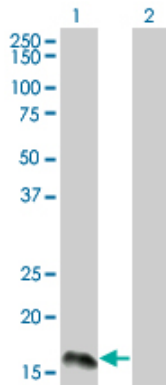
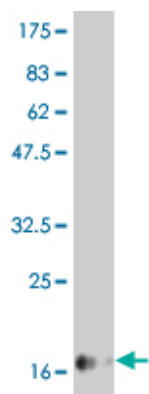
---

<b>Gene ID</b>	3440
<b>Other Names</b>	Interferon alpha-2, IFN-alpha-2, Interferon alpha-A, LeIF A, IFNA2, IFNA2A, IFNA2B, IFNA2C
<b>Target/Specificity</b>	IFNA2 (NP_000596, 24 a.a. ~ 188 a.a) partial recombinant protein.
<b>Dilution</b>	WB~~1:500~1000
<b>Format</b>	Clear, colorless solution in phosphate buffered saline, pH 7.2 .
<b>Storage</b>	Store at -20°C or lower. Aliquot to avoid repeated freezing and thawing.
<b>Precautions</b>	IFNA2 Antibody (monoclonal) (M34) is for research use only and not for use in diagnostic or therapeutic procedures.

### Images

---

Antibody Reactive Against Recombinant Protein.Western  
Blot detection against Immunogen (19.2 KDa) .



Western Blot analysis of IFNA2 expression in transfected 293T cell line by IFNA2 monoclonal antibody (M34), clone 1A11.

Lane 1: IFNA2 transfected lysate(21.6 KDa).

Lane 2: Non-transfected lysate.

Please note: All products are 'FOR RESEARCH USE ONLY. NOT FOR USE IN DIAGNOSTIC OR THERAPEUTIC PROCEDURES'.