

IFNA2 Antibody (monoclonal) (M38)

Mouse monoclonal antibody raised against a partial recombinant IFNA2.

Catalog # AT2488a

Product Information

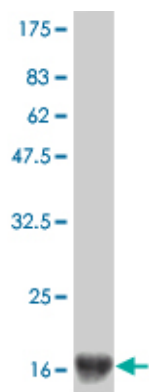
Application	WB
Primary Accession	P01563
Other Accession	NM_000605
Reactivity	Human
Host	mouse
Clonality	monoclonal
Isotype	IgG2b Kappa
Clone Names	2D10
Calculated MW	21578

Additional Information

Gene ID	3440
Other Names	Interferon alpha-2, IFN-alpha-2, Interferon alpha-A, LeIF A, IFNA2, IFNA2A, IFNA2B, IFNA2C
Target/Specificity	IFNA2 (NP_000596, 24 a.a. ~ 188 a.a) partial recombinant protein.
Dilution	WB~~1:500~1000
Format	Clear, colorless solution in phosphate buffered saline, pH 7.2 .
Storage	Store at -20°C or lower. Aliquot to avoid repeated freezing and thawing.
Precautions	IFNA2 Antibody (monoclonal) (M38) is for research use only and not for use in diagnostic or therapeutic procedures.

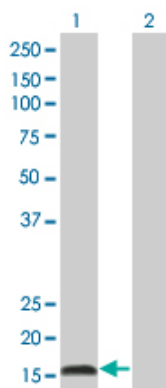
Images

Antibody Reactive Against Recombinant Protein.Western
Blot detection against Immunogen (19.2 KDa) .



Western Blot analysis of IFNA2 expression in transfected 293T cell line by IFNA2 monoclonal antibody (M38), clone 2D10.

Lane 1: IFNA2 transfected lysate(21.6 KDa).
Lane 2: Non-transfected lysate.



Please note: All products are 'FOR RESEARCH USE ONLY. NOT FOR USE IN DIAGNOSTIC OR THERAPEUTIC PROCEDURES'.