

## IFRD2 Antibody (monoclonal) (M01)

Mouse monoclonal antibody raised against a full length recombinant IFRD2.

Catalog # AT2490a

### Product Information

---

<b>Application</b>	WB, IF, E
<b>Primary Accession</b>	<a href="#">Q12894</a>
<b>Other Accession</b>	<a href="#">BC001327</a>
<b>Reactivity</b>	Human
<b>Host</b>	mouse
<b>Clonality</b>	monoclonal
<b>Isotype</b>	IgG1 Kappa
<b>Clone Names</b>	1A4-1G1
<b>Calculated MW</b>	48048

### Additional Information

---

<b>Gene ID</b>	7866
<b>Other Names</b>	Interferon-related developmental regulator 2, Protein SKMC15, IFRD2
<b>Target/Specificity</b>	IFRD2 (AAH01327, 1 a.a. ~ 442 a.a) full-length recombinant protein with GST tag. MW of the GST tag alone is 26 KDa.
<b>Dilution</b>	WB~~1:500~1000 IF~~1:50~200 E~~N/A
<b>Format</b>	Clear, colorless solution in phosphate buffered saline, pH 7.2 .
<b>Storage</b>	Store at -20°C or lower. Aliquot to avoid repeated freezing and thawing.
<b>Precautions</b>	IFRD2 Antibody (monoclonal) (M01) is for research use only and not for use in diagnostic or therapeutic procedures.

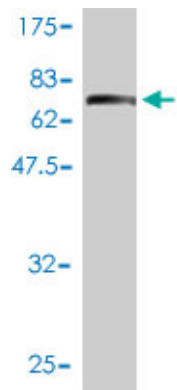
### References

---

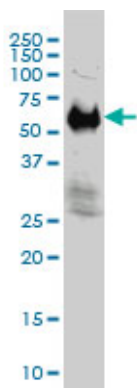
Genetic variation and antioxidant response gene expression in the bronchial airway epithelium of smokers at risk for lung cancer. Wang X, et al. PLoS One, 2010 Aug 3. PMID 20689807. Defining the human deubiquitinating enzyme interaction landscape. Sowa ME, et al. Cell, 2009 Jul 23. PMID 19615732. Signal sequence and keyword trap in silico for selection of full-length human cDNAs encoding secretion or membrane proteins from oligo-capped cDNA libraries. Otsuki T, et al. DNA Res, 2005. PMID 16303743. The status, quality, and expansion of the NIH full-length cDNA project: the Mammalian Gene Collection (MGC). Gerhard DS, et al. Genome Res, 2004 Oct. PMID 15489334. Complete sequencing and characterization of 21,243 full-length human cDNAs. Ota T, et al. Nat Genet, 2004 Jan. PMID 14702039.

### Images

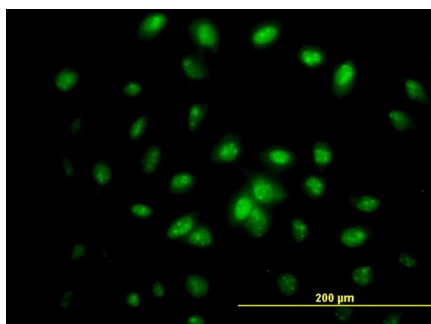
---



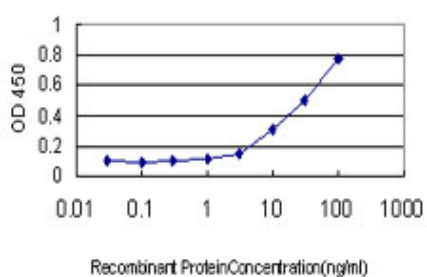
Antibody Reactive Against Recombinant Protein. Western Blot detection against Immunogen (74.36 KDa) .



IFRD2 monoclonal antibody (M01), clone 1A4-1G1  
Western Blot analysis of IFRD2 expression in HeLa S3 NE (Cat # AT2490a )



Immunofluorescence of monoclonal antibody to IFRD2 on HeLa cell. [antibody concentration 10 ug/ml]



Detection limit for recombinant GST tagged IFRD2 is approximately 1 ng/ml as a capture antibody.

Please note: All products are 'FOR RESEARCH USE ONLY. NOT FOR USE IN DIAGNOSTIC OR THERAPEUTIC PROCEDURES'.