

# IGSF8 Antibody (monoclonal) (M01)

Mouse monoclonal antibody raised against a partial recombinant IGSF8.

Catalog # AT2496a

## Product Information

---

|                          |                          |
|--------------------------|--------------------------|
| <b>Application</b>       | E                        |
| <b>Primary Accession</b> | <a href="#">Q969P0</a>   |
| <b>Other Accession</b>   | <a href="#">BC004108</a> |
| <b>Reactivity</b>        | Human                    |
| <b>Host</b>              | mouse                    |
| <b>Clonality</b>         | monoclonal               |
| <b>Isotype</b>           | IgG1 Kappa               |
| <b>Clone Names</b>       | 1E5                      |
| <b>Calculated MW</b>     | 65034                    |

## Additional Information

---

|                           |   |
|---------------------------|---|
| <b>Gene ID</b>            | 93185   |
| <b>Other Names</b>        | Immunoglobulin superfamily member 8, IGSF8, CD81 partner 3, Glu-Trp-Ile EWI motif-containing protein 2, EWI-2, Keratinocytes-associated transmembrane protein 4, KCT-4, LIR-D1, Prostaglandin regulatory-like protein, PGRL, CD316, IGSF8, CD81P3, EWI2, KCT4 |
| <b>Target/Specificity</b> | IGSF8 (AAH04108, 220 a.a. ~ 322 a.a) partial recombinant protein with GST tag. MW of the GST tag alone is 26 KDa.   |
| <b>Dilution</b>           | E~~N/A  |
| <b>Format</b>             | Clear, colorless solution in phosphate buffered saline, pH 7.2 .  |
| <b>Storage</b>            | Store at -20°C or lower. Aliquot to avoid repeated freezing and thawing.  |
| <b>Precautions</b>        | IGSF8 Antibody (monoclonal) (M01) is for research use only and not for use in diagnostic or therapeutic procedures.   |

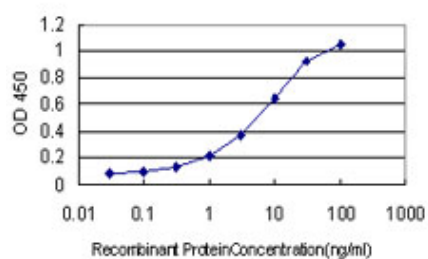
## References

---

Glioblastoma inhibition by cell surface immunoglobulin protein EWI-2, in vitro and in vivo. Kolesnikova TV, et al. Neoplasia, 2009 Jan. PMID 19107234. The CD81 partner EWI-2 inhibits hepatitis C virus entry. Rocha-Perugini V, et al. PLoS One, 2008 Apr 2. PMID 18382656. EWI-2/CD316 is an inducible receptor of HSPA8 on human dendritic cells. Kettner S, et al. Mol Cell Biol, 2007 Nov. PMID 17785435. EWI-2 and EWI-F link the tetraspanin web to the actin cytoskeleton through their direct association with ezrin-radixin-moesin proteins. Sala-Valdés M, et al. J Biol Chem, 2006 Jul 14. PMID 16690612. Contrasting effects of EWI proteins, integrins, and protein palmitoylation on cell surface CD9 organization. Yang XH, et al. J Biol Chem, 2006 May

## Images

---



Detection limit for recombinant GST tagged IGSF8 is approximately 0.1 ng/ml as a capture antibody.

Please note: All products are 'FOR RESEARCH USE ONLY. NOT FOR USE IN DIAGNOSTIC OR THERAPEUTIC PROCEDURES'.