

IL13RA2 Antibody (monoclonal) (M01)

Mouse monoclonal antibody raised against a partial recombinant IL13RA2.

Catalog # AT2504a

Product Information

| | |
|--------------------------|---------------------------|
| Application | WB, E |
| Primary Accession | Q14627 |
| Other Accession | NM_000640 |
| Reactivity | Human |
| Host | mouse |
| Clonality | monoclonal |
| Isotype | IgG2a Kappa |
| Clone Names | 2E11 |
| Calculated MW | 44176 |

Additional Information

| | |
|---------------------------|--|
| Gene ID | 3598 |
| Other Names | Interleukin-13 receptor subunit alpha-2, IL-13 receptor subunit alpha-2, IL-13R subunit alpha-2, IL-13R-alpha-2, IL-13RA2, Interleukin-13-binding protein, CD213a2, IL13RA2, IL13R |
| Target/Specificity | IL13RA2 (NP_000631, 27 a.a. ~ 126 a.a) partial recombinant protein with GST tag. MW of the GST tag alone is 26 KDa. |
| Dilution | WB~~1:500~1000 E~~N/A |
| Format | Clear, colorless solution in phosphate buffered saline, pH 7.2 . |
| Storage | Store at -20°C or lower. Aliquot to avoid repeated freezing and thawing. |
| Precautions | IL13RA2 Antibody (monoclonal) (M01) is for research use only and not for use in diagnostic or therapeutic procedures. |

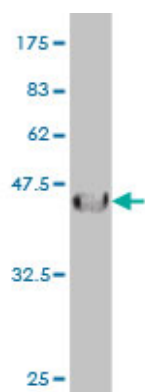
Background

The protein encoded by this gene is closely related to IL13RA1, a subunit of the interleukin 13 receptor complex. This protein binds IL13 with high affinity, but lacks cytoplasmic domain, and does not appear to function as a signal mediator. It is reported to play a role in the internalization of IL13.

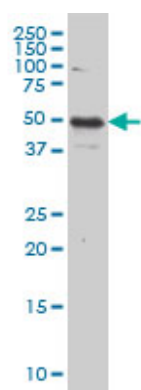
References

1.Normal-appearing white matter in multiple sclerosis is in a subtle balance between inflammation and neuroprotection.Zeis T, Graumann U, Reynolds R, Schaeren-Wiemers N.Brain. 2008 Jan;131(Pt 1):288-303.

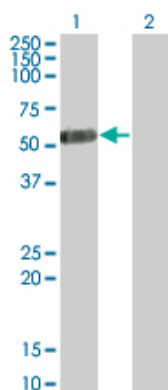
Images



Antibody Reactive Against Recombinant Protein. Western Blot detection against Immunogen (36.74 KDa) .

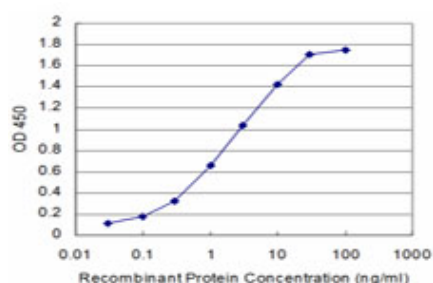


IL13RA2 monoclonal antibody (M01), clone 2E10. Western Blot analysis of IL13RA2 expression in HeLa.



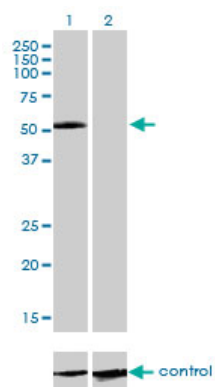
Western Blot analysis of IL13RA2 expression in transfected 293T cell line by IL13RA2 monoclonal antibody (M01), clone 2E10.

Lane 1: IL13RA2 transfected lysate(44.176 KDa).
Lane 2: Non-transfected lysate.



Detection limit for recombinant GST tagged IL13RA2 is approximately 0.1ng/ml as a capture antibody.

Western blot analysis of IL13RA2 over-expressed 293 cell line, cotransfected with IL13RA2 Validated Chimera RNAi (Cat # AT2504a)



Please note: All products are 'FOR RESEARCH USE ONLY. NOT FOR USE IN DIAGNOSTIC OR THERAPEUTIC PROCEDURES'.