

IL1A Antibody (monoclonal) (M01)

Mouse monoclonal antibody raised against a partial recombinant IL1A.

Catalog # AT2508a

Product Information

Application	WB, E
Primary Accession	P01583
Other Accession	BC013142
Reactivity	Human
Host	mouse
Clonality	monoclonal
Isotype	IgG1 Kappa
Clone Names	4B8
Calculated MW	30607

Additional Information

Gene ID	3552
Other Names	Interleukin-1 alpha, IL-1 alpha, Hematopoietin-1, IL1A, IL1F1
Target/Specificity	IL1A (AAH13142, 172 a.a. ~ 271 a.a) partial recombinant protein with GST tag. MW of the GST tag alone is 26 KDa.
Dilution	WB~~1:500~1000 E~~N/A
Format	Clear, colorless solution in phosphate buffered saline, pH 7.2 .
Storage	Store at -20°C or lower. Aliquot to avoid repeated freezing and thawing.
Precautions	IL1A Antibody (monoclonal) (M01) is for research use only and not for use in diagnostic or therapeutic procedures.

Background

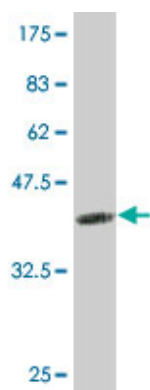
The protein encoded by this gene is a member of the interleukin 1 cytokine family. This cytokine is a pleiotropic cytokine involved in various immune responses, inflammatory processes, and hematopoiesis. This cytokine is produced by monocytes and macrophages as a proprotein, which is proteolytically processed and released in response to cell injury, and thus induces apoptosis. This gene and eight other interleukin 1 family genes form a cytokine gene cluster on chromosome 2. It has been suggested that the polymorphism of these genes is associated with rheumatoid arthritis and Alzheimer's disease.

References

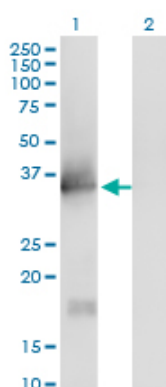
CCL3 genotype and current depression increase risk of HIV-associated dementia. Levine AJ, et al.

Neurobehav HIV Med, 2009 Nov. PMID 20725607. An approach based on a genome-wide association study reveals candidate loci for narcolepsy. Shimada M, et al. Hum Genet, 2010 Oct. PMID 20677014. A genetic association study of maternal and fetal candidate genes that predispose to preterm prelabor rupture of membranes (PROM). Romero R, et al. Am J Obstet Gynecol, 2010 Jul 29. PMID 20673868. Interleukin-1A +4845(G>T) polymorphism is a factor predisposing to acne vulgaris. Szab? K, et al. Tissue Antigens, 2010 Jul 11. PMID 20630038. Variation at the NFATC2 Locus Increases the Risk of Thiazolinedinedione-Induced Edema in the Diabetes REDuction Assessment with ramipril and rosiglitazone Medication (DREAM) Study. Bailey SD, et al. Diabetes Care, 2010 Jul 13. PMID 20628086.

Images

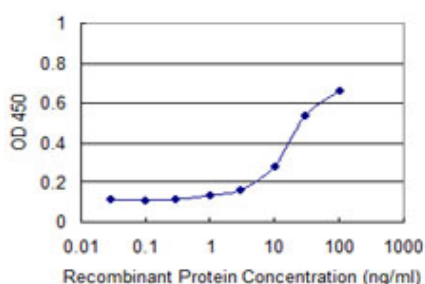


Antibody Reactive Against Recombinant Protein. Western Blot detection against Immunogen (36.63 KDa) .



Western Blot analysis of IL1A expression in transfected 293T cell line by IL1A monoclonal antibody (M01), clone 4B8.

Lane 1: IL1A transfected lysate (30.6 KDa).
Lane 2: Non-transfected lysate.



Detection limit for recombinant GST tagged IL1A is approximately 3ng/ml as a capture antibody.

Please note: All products are 'FOR RESEARCH USE ONLY. NOT FOR USE IN DIAGNOSTIC OR THERAPEUTIC PROCEDURES'.