

# IL23R Antibody (monoclonal) (M01)

Mouse monoclonal antibody raised against a partial recombinant IL23R.

Catalog # AT2517a

## Product Information

---

<b>Application</b>	WB, E
<b>Primary Accession</b>	<a href="#">Q5VWK5</a>
<b>Other Accession</b>	<a href="#">NM_144701</a>
<b>Reactivity</b>	Human
<b>Host</b>	mouse
<b>Clonality</b>	monoclonal
<b>Isotype</b>	IgG2a Kappa
<b>Clone Names</b>	3D7
<b>Calculated MW</b>	71722

## Additional Information

---

<b>Gene ID</b>	149233
<b>Other Names</b>	Interleukin-23 receptor, IL-23 receptor, IL-23R, IL23R
<b>Target/Specificity</b>	IL23R (NP_653302, 553 a.a. ~ 628 a.a) partial recombinant protein with GST tag. MW of the GST tag alone is 26 KDa.
<b>Dilution</b>	WB~~1:500~1000 E~~N/A
<b>Format</b>	Clear, colorless solution in phosphate buffered saline, pH 7.2 .
<b>Storage</b>	Store at -20°C or lower. Aliquot to avoid repeated freezing and thawing.
<b>Precautions</b>	IL23R Antibody (monoclonal) (M01) is for research use only and not for use in diagnostic or therapeutic procedures.

## Background

---

The protein encoded by this gene is a subunit of the receptor for IL23A/IL23. This protein pairs with the receptor molecule IL12RB1/IL12Rbeta1, and both are required for IL23A signaling. This protein associates constitutively with Janus kinase 2 (JAK2), and also binds to transcription activator STAT3 in a ligand-dependent manner.

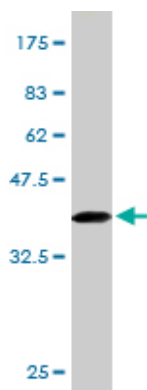
## References

---

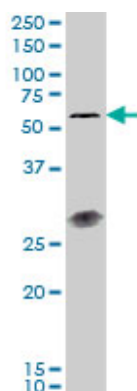
Variation at the NFATC2 Locus Increases the Risk of Thiazolinedione-Induced Edema in the Diabetes REduction Assessment with ramipril and rosiglitazone Medication (DREAM) Study. Bailey SD, et al. Diabetes Care, 2010 Jul 13. PMID 20628086. Toll-like receptor 9, NOD2 and IL23R gene polymorphisms influenced

outcome in AML patients transplanted from HLA-identical sibling donors. Elmaagacli AH, et al. Bone Marrow Transplant, 2010 Jul 12. PMID 20622911. Genome-wide association studies identify IL23R-IL12RB2 and IL10 as Behçet's disease susceptibility loci. Mizuki N, et al. Nat Genet, 2010 Aug. PMID 20622879. Genome-wide association study identifies variants in the MHC class I, IL10, and IL23R-IL12RB2 regions associated with Behçet's disease. Remmers EF, et al. Nat Genet, 2010 Aug. PMID 20622878. A nonsynonymous polymorphism in IL23R gene is associated with risk of gastric cancer in a Chinese population. Chen J, et al. Mol Carcinog, 2010 Oct. PMID 20607725.

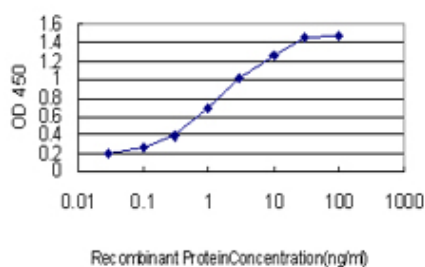
## Images



Antibody Reactive Against Recombinant Protein. Western Blot detection against Immunogen (34.1 KDa) .



IL23R monoclonal antibody (M01), clone 3D7 Western Blot analysis of IL23R expression in A-431 (Cat # AT2517a )



Detection limit for recombinant GST tagged IL23R is approximately 0.1 ng/ml as a capture antibody.

Please note: All products are 'FOR RESEARCH USE ONLY. NOT FOR USE IN DIAGNOSTIC OR THERAPEUTIC PROCEDURES'.