

IL6 Antibody (monoclonal) (M08)

Mouse monoclonal antibody raised against a full-length recombinant IL6.

Catalog # AT2521a

Product Information

Application	WB
Primary Accession	P05231
Other Accession	NM_000600
Reactivity	Human
Host	mouse
Clonality	monoclonal
Isotype	IgG2b Kappa
Clone Names	2C5
Calculated MW	23718

Additional Information

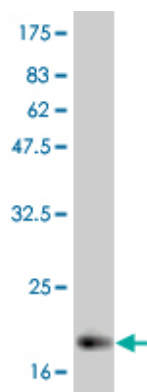
Gene ID	3569
Other Names	Interleukin-6, IL-6, B-cell stimulatory factor 2, BSF-2, CTL differentiation factor, CDF, Hybridoma growth factor, Interferon beta-2, IFN-beta-2, IL6, IFNB2
Target/Specificity	IL6 (NP_000591, 29 a.a.-212 a.a.) full-length recombinant protein.
Dilution	WB~~1:500~1000
Format	Clear, colorless solution in phosphate buffered saline, pH 7.2 .
Storage	Store at -20°C or lower. Aliquot to avoid repeated freezing and thawing.
Precautions	IL6 Antibody (monoclonal) (M08) is for research use only and not for use in diagnostic or therapeutic procedures.

Background

IL6 is an immunoregulatory cytokine that activates a cell surface signaling assembly composed of IL6, IL6RA (IL6R; MIM 147880), and the shared signaling receptor gp130 (IL6ST; MIM 600694) (Boulanger et al., 2003 [PubMed 12829785]).[supplied by OMIM]

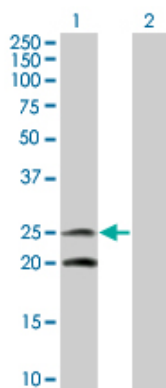
Images

Antibody Reactive Against Recombinant Protein.Western
Blot detection against Immunogen (21 KDa) .



Western Blot analysis of IL6 expression in transfected 293T cell line by IL6 monoclonal antibody (M08), clone 2C5.

Lane 1: IL6 transfected lysate(23.7 KDa).
Lane 2: Non-transfected lysate.



Please note: All products are 'FOR RESEARCH USE ONLY. NOT FOR USE IN DIAGNOSTIC OR THERAPEUTIC PROCEDURES'.