

## IL6R Antibody (monoclonal) (M01)

Mouse monoclonal antibody raised against a partial recombinant IL6R.

Catalog # AT2522a

### Product Information

---

<b>Application</b>	WB, E
<b>Primary Accession</b>	<a href="#">P08887</a>
<b>Other Accession</b>	<a href="#">NM_000565</a>
<b>Reactivity</b>	Human
<b>Host</b>	mouse
<b>Clonality</b>	monoclonal
<b>Isotype</b>	IgG2b Kappa
<b>Clone Names</b>	2G6
<b>Calculated MW</b>	51548

### Additional Information

---

<b>Gene ID</b>	3570
<b>Other Names</b>	Interleukin-6 receptor subunit alpha, IL-6 receptor subunit alpha, IL-6R subunit alpha, IL-6R-alpha, IL-6RA, IL-6R 1, Membrane glycoprotein 80, gp80, CD126, IL6R
<b>Target/Specificity</b>	IL6R (NP_000556, 21 a.a. ~ 120 a.a) partial recombinant protein with GST tag. MW of the GST tag alone is 26 KDa.
<b>Dilution</b>	WB~~1:500~1000 E~~N/A
<b>Format</b>	Clear, colorless solution in phosphate buffered saline, pH 7.2 .
<b>Storage</b>	Store at -20°C or lower. Aliquot to avoid repeated freezing and thawing.
<b>Precautions</b>	IL6R Antibody (monoclonal) (M01) is for research use only and not for use in diagnostic or therapeutic procedures.

### Background

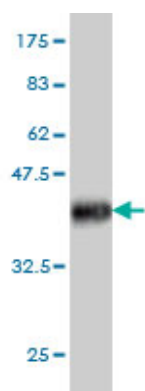
---

Interleukin 6 (IL6) is a potent pleiotropic cytokine that regulates cell growth and differentiation and plays an important role in immune response. The protein encoded by this gene is a subunit of the receptor complex for IL6. The IL6 receptor is a protein complex consisting of this protein and interleukin 6 signal transducer (IL6ST/GP130/IL6-beta), a receptor subunit also shared by many other cytokines. Dysregulated production of IL6 and this receptor are implicated in the pathogenesis of many diseases, such as multiple myeloma, autoimmune diseases and prostate cancer. Alternatively spliced transcript variants encoding distinct isoforms have been reported.

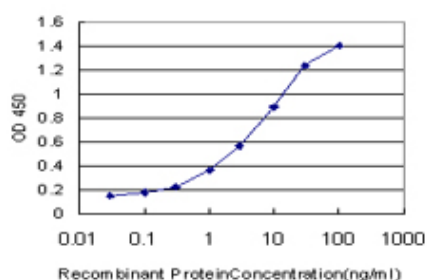
## References

A genetic association study of maternal and fetal candidate genes that predispose to preterm prelabor rupture of membranes (PROM). Romero R, et al. Am J Obstet Gynecol, 2010 Jul 29. PMID 20673868. Plasma soluble IL-6 receptor concentration in rheumatoid arthritis: associations with the rs8192284 IL6R polymorphism and with disease activity. Rodr?guez-Rodr?guez L, et al. Rheumatol Int, 2010 Jul 27. PMID 20661738. Variation at the NFATC2 Locus Increases the Risk of Thiazolinedinedione-Induced Edema in the Diabetes REduction Assessment with ramipril and rosiglitazone Medication (DREAM) Study. Bailey SD, et al. Diabetes Care, 2010 Jul 13. PMID 20628086. Gene-gene interaction in regulatory T-cell function in atopy and asthma development in childhood. Bottema RW, et al. J Allergy Clin Immunol, 2010 Aug. PMID 20599261. Influence of IL6R rs8192284 polymorphism status in disease activity in rheumatoid arthritis. Lamas JR, et al. J Rheumatol, 2010 Aug 1. PMID 20551110.

## Images



Antibody Reactive Against Recombinant Protein. Western Blot detection against Immunogen (36.74 KDa) .



Detection limit for recombinant GST tagged IL6R is approximately 0.1 ng/ml as a capture antibody.

Please note: All products are 'FOR RESEARCH USE ONLY. NOT FOR USE IN DIAGNOSTIC OR THERAPEUTIC PROCEDURES'.