

IL8 Antibody (monoclonal) (M04)

Mouse monoclonal antibody raised against a partial recombinant IL8.

Catalog # AT2525a

Product Information

Application	WB, E
Primary Accession	P10145
Other Accession	BC013615.1
Reactivity	Human
Host	mouse
Clonality	monoclonal
Isotype	IgG2a Kappa
Clone Names	1E10
Calculated MW	11098

Additional Information

Gene ID	3576
Other Names	Interleukin-8, IL-8, C-X-C motif chemokine 8, Chemokine (C-X-C motif) ligand 8, Emotakin, Granulocyte chemotactic protein 1, GCP-1, Monocyte-derived neutrophil chemotactic factor, MDNCF, Monocyte-derived neutrophil-activating peptide, MONAP, Neutrophil-activating protein 1, NAP-1, Protein 3-10C, T-cell chemotactic factor, MDNCF-a, GCP/IL-8 protein IV, IL8/NAP1 form I, Interleukin-8, (Ala-IL-8)77, GCP/IL-8 protein II, IL-8(1-77), IL8/NAP1 form II, MDNCF-b, IL-8(5-77), IL-8(6-77), (Ser-IL-8)72, GCP/IL-8 protein I, IL8/NAP1 form III, Lymphocyte-derived neutrophil-activating factor, LYNAF, MDNCF-c, Neutrophil-activating factor, NAF, IL-8(7-77), GCP/IL-8 protein V, IL8/NAP1 form IV, IL-8(8-77), GCP/IL-8 protein VI, IL8/NAP1 form V, IL-8(9-77), GCP/IL-8 protein III, IL8/NAP1 form VI, CXCL8, IL8
Target/Specificity	IL8 (AAH13615.1, 21 a.a. ~ 99 a.a) partial recombinant protein with GST tag. MW of the GST tag alone is 26 KDa.
Dilution	WB~~1:500~1000 E~~N/A
Format	Clear, colorless solution in phosphate buffered saline, pH 7.2 .
Storage	Store at -20°C or lower. Aliquot to avoid repeated freezing and thawing.
Precautions	IL8 Antibody (monoclonal) (M04) is for research use only and not for use in diagnostic or therapeutic procedures.

Background

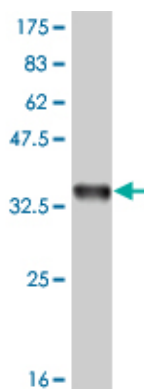
The protein encoded by this gene is a member of the CXC chemokine family. This chemokine is one of the

major mediators of the inflammatory response. This chemokine is secreted by several cell types. It functions as a chemoattractant, and is also a potent angiogenic factor. This gene is believed to play a role in the pathogenesis of bronchiolitis, a common respiratory tract disease caused by viral infection. This gene and other ten members of the CXC chemokine gene family form a chemokine gene cluster in a region mapped to chromosome 4q.

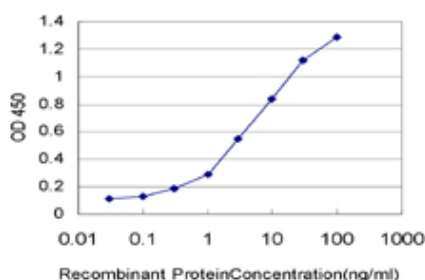
References

Gene-gene interaction between tuberculosis candidate genes in a South African population. de Wit E, et al. *Mamm Genome*, 2010 Aug 27. PMID 20799037. Paget's disease of bone is not associated with common polymorphisms in interleukin-6, interleukin-8 and tumor necrosis factor alpha genes. Corral-Gudino L, et al. *Cytokine*, 2010 Aug 13. PMID 20709566. A genetic association study of maternal and fetal candidate genes that predispose to preterm prelabor rupture of membranes (PROM). Romero R, et al. *Am J Obstet Gynecol*, 2010 Jul 29. PMID 20673868. A large-scale candidate gene approach identifies SNPs in SOD2 and IL13 as predictive markers of response to preoperative chemoradiation in rectal cancer. Ho-Pun-Cheung A, et al. *Pharmacogenomics J*, 2010 Jul 20. PMID 20644561. Cetuximab as second-line therapy in patients with metastatic esophageal adenocarcinoma: a phase II Southwest Oncology Group Study (S0415). Gold PJ, et al. *J Thorac Oncol*, 2010 Sep. PMID 20631636.

Images



Antibody Reactive Against Recombinant Protein. Western Blot detection against Immunogen (34.32 KDa) .



Detection limit for recombinant GST tagged IL8 is approximately 0.1 ng/ml as a capture antibody.

Please note: All products are 'FOR RESEARCH USE ONLY. NOT FOR USE IN DIAGNOSTIC OR THERAPEUTIC PROCEDURES'.