

IRX6 Antibody (monoclonal) (M01)

Mouse monoclonal antibody raised against a partial recombinant IRX6.

Catalog # AT2556a

Product Information

Application	WB, E
Primary Accession	P78412
Other Accession	NM_024335
Reactivity	Human
Host	mouse
Clonality	monoclonal
Isotype	IgG1 Kappa
Clone Names	1A5
Calculated MW	48240

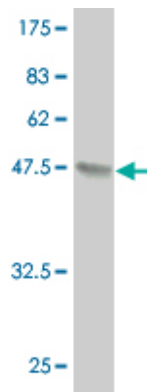
Additional Information

Gene ID	79190
Other Names	Iroquois-class homeodomain protein IRX-6, Homeodomain protein IRXB3, Iroquois homeobox protein 6, IRX6, IRX7, IRXB3
Target/Specificity	IRX6 (NP_077311, 337 a.a. ~ 446 a.a) partial recombinant protein with GST tag. MW of the GST tag alone is 26 KDa.
Dilution	WB~~1:500~1000 E~~N/A
Format	Clear, colorless solution in phosphate buffered saline, pH 7.2 .
Storage	Store at -20°C or lower. Aliquot to avoid repeated freezing and thawing.
Precautions	IRX6 Antibody (monoclonal) (M01) is for research use only and not for use in diagnostic or therapeutic procedures.

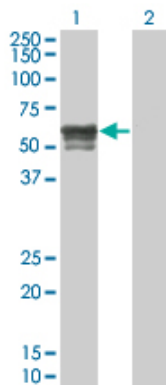
References

Complete sequencing and characterization of 21,243 full-length human cDNAs. Ota T, et al. Nat Genet, 2004 Jan. PMID 14702039.Generation and initial analysis of more than 15,000 full-length human and mouse cDNA sequences. Strausberg RL, et al. Proc Natl Acad Sci U S A, 2002 Dec 24. PMID 12477932.Cloning and chromosome mapping of human and chicken Iroquois (IRX) genes. Ogura K, et al. Cytogenet Cell Genet, 2001. PMID 11435706.Regulated expression patterns of IRX-2, an Iroquois-class homeobox gene, in the human breast. Lewis MT, et al. Cell Tissue Res, 1999 Jun. PMID 10370142.Normalization and subtraction: two approaches to facilitate gene discovery. Bonaldo MF, et al. Genome Res, 1996 Sep. PMID 8889548.

Images

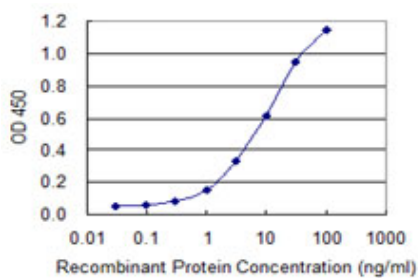


Antibody Reactive Against Recombinant Protein. Western Blot detection against Immunogen (37.84 KDa) .

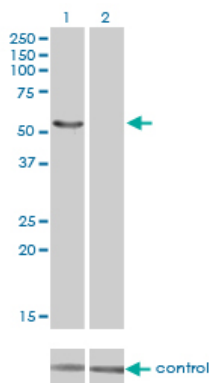


Western Blot analysis of IRX6 expression in transfected 293T cell line by IRX6 monoclonal antibody (M01), clone 1A5.

Lane 1: IRX6 transfected lysate (48.169 KDa).
Lane 2: Non-transfected lysate.



Detection limit for recombinant GST tagged IRX6 is 0.1 ng/ml as a capture antibody.



Western blot analysis of IRX6 over-expressed 293 cell line, cotransfected with IRX6 Validated Chimera RNAi (Cat # AT2556a)

Please note: All products are 'FOR RESEARCH USE ONLY. NOT FOR USE IN DIAGNOSTIC OR THERAPEUTIC PROCEDURES'.