

ISL1 Antibody (monoclonal) (M01)

Mouse monoclonal antibody raised against a partial recombinant ISL1.

Catalog # AT2560a

Product Information

Application	WB, E
Primary Accession	P61371
Other Accession	NM_002202
Reactivity	Human
Host	mouse
Clonality	monoclonal
Isotype	IgG2a Kappa
Clone Names	1A3
Calculated MW	39036

Additional Information

Gene ID	3670
Other Names	Insulin gene enhancer protein ISL-1, Islet-1, ISL1
Target/Specificity	ISL1 (NP_002193, 63 a.a. ~ 159 a.a) partial recombinant protein with GST tag. MW of the GST tag alone is 26 KDa.
Dilution	WB~~1:500~1000 E~~N/A
Format	Clear, colorless solution in phosphate buffered saline, pH 7.2 .
Storage	Store at -20°C or lower. Aliquot to avoid repeated freezing and thawing.
Precautions	ISL1 Antibody (monoclonal) (M01) is for research use only and not for use in diagnostic or therapeutic procedures.

Background

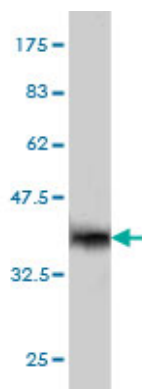
This gene encodes a member of the LIM/homeodomain family of transcription factors. The encoded protein binds to the enhancer region of the insulin gene, among others, and may play an important role in regulating insulin gene expression. The encoded protein is central to the development of pancreatic cell lineages and may also be required for motor neuron generation. Mutations in this gene have been associated with maturity-onset diabetes of the young.

References

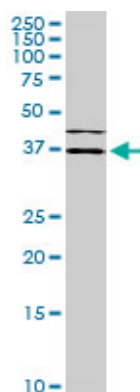
New mutations in ZFPM2/FOG2 gene in tetralogy of Fallot and double outlet right ventricle. De Luca A, et al. Clin Genet, 2010 Aug 2. PMID 20807224. Common variation in ISL1 confers genetic susceptibility for human

congenital heart disease. Stevens KN, et al. PLoS One, 2010 May 26. PMID 20520780. A Three-Stage Genome-Wide Association Study of General Cognitive Ability: Hunting the Small Effects. Davis OS, et al. Behav Genet, 2010 Mar 21. PMID 20306291. Early first trimester human embryonic cardiac Islet-1 progenitor cells and cardiomyocytes: Immunohistochemical and electrophysiological characterization. Genead R, et al. Stem Cell Res, 2010 Jan. PMID 19896915. The LIM-homeodomain protein ISL1 activates insulin gene promoter directly through synergy with BETA2. Zhang H, et al. J Mol Biol, 2009 Sep 25. PMID 19619559.

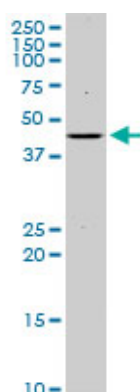
Images



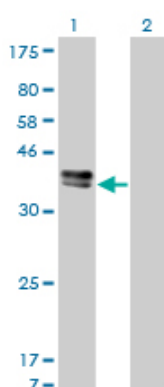
Antibody Reactive Against Recombinant Protein. Western Blot detection against Immunogen (36.41 KDa) .



ISL1 monoclonal antibody (M01), clone 1A3. Western Blot analysis of ISL1 expression in Hela S3 NE((Cat # AT2560a)

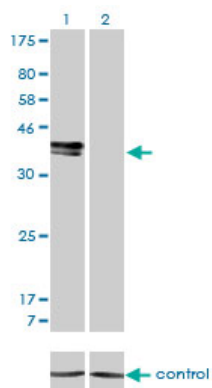


ISL1 monoclonal antibody (M01), clone 1A3. Western Blot analysis of ISL1 expression in K-562((Cat # AT2560a)



Western Blot analysis of ISL1 expression in transfected 293T cell line by ISL1 monoclonal antibody (M01), clone 1A3.

Lane 1: ISL1 transfected lysate(38.7 KDa).
Lane 2: Non-transfected lysate.



Detection limit for recombinant GST tagged ISL1 is approximately 30ng/ml as a capture antibody.

Please note: All products are 'FOR RESEARCH USE ONLY. NOT FOR USE IN DIAGNOSTIC OR THERAPEUTIC PROCEDURES'.