

ISL1 Antibody (monoclonal) (M05)

Mouse monoclonal antibody raised against a partial recombinant ISL1.

Catalog # AT2561a

Product Information

Application	WB, IF
Primary Accession	P61371
Other Accession	NM_002202
Reactivity	Human, Rat
Host	mouse
Clonality	monoclonal
Isotype	IgG2a Kappa
Clone Names	2E8
Calculated MW	39036

Additional Information

Gene ID	3670
Other Names	Insulin gene enhancer protein ISL-1, Islet-1, ISL1
Target/Specificity	ISL1 (NP_002193, 63 a.a. ~ 159 a.a) partial recombinant protein with GST tag. MW of the GST tag alone is 26 KDa.
Dilution	WB~~1:500~1000 IF~~1:50~200
Format	Clear, colorless solution in phosphate buffered saline, pH 7.2 .
Storage	Store at -20°C or lower. Aliquot to avoid repeated freezing and thawing.
Precautions	ISL1 Antibody (monoclonal) (M05) is for research use only and not for use in diagnostic or therapeutic procedures.

Background

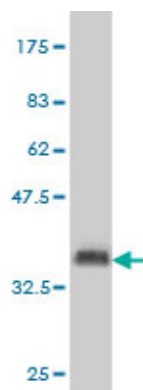
This gene encodes a member of the LIM/homeodomain family of transcription factors. The encoded protein binds to the enhancer region of the insulin gene, among others, and may play an important role in regulating insulin gene expression. The encoded protein is central to the development of pancreatic cell lineages and may also be required for motor neuron generation. Mutations in this gene have been associated with maturity-onset diabetes of the young.

References

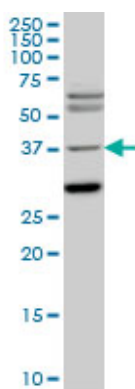
1.ISL-1 is overexpressed in non-Hodgkin lymphoma and promotes lymphoma cell proliferation by forming a p-STAT3/p-c-Jun/ISL-1 complex.Zhang Q, Yang Z, Jia Z, Liu C, Guo C, Lu H, Chen P, Ma K, Wang W, Zhou CMol

Cancer. 2014 Jul 29;13(1):181. doi: 10.1186/1476-4598-13-181.2.A positive feedback regulation of ISL-1 in DLBCL but not in pancreatic β -cells.Zhang Q, Yang Z, Wang W, Guo T, Jia Z, Ma K, Zhou C Biochem Biophys Res Commun. 2014 Jul 4;449(3):295-300. doi: 10.1016/j.bbrc.2014.05.021. Epub 2014 May 15.3.Interaction of Wnt/ β -catenin and Notch signaling in the early stage of cardiac differentiation of P19CL6 cells.Li B, Jia Z, Wang T, Wang W, Zhang C, Chen P, Ma K, Zhou C J Cell Biochem. 2011 Sep 28. doi: 10.1002/jcb.23390.4.ISL1 Promotes Pancreatic Islet Cell Proliferation.Guo T, Wang W, Zhang H, Liu Y, Chen P, Ma K, Zhou C. PLoS One. 2011;6(8):e22387. Epub 2011 Aug 4.

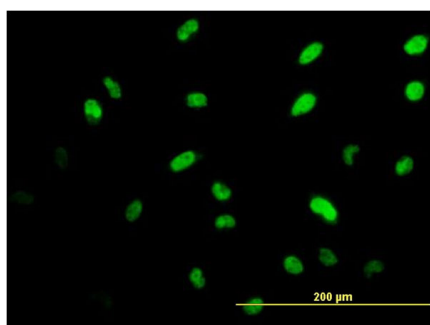
Images



Antibody Reactive Against Recombinant Protein. Western Blot detection against Immunogen (36.41 KDa) .



ISL1 monoclonal antibody (M05), clone 2E7 Western Blot analysis of ISL1 expression in PC-12 ((Cat # AT2561a)



Immunofluorescence of monoclonal antibody to ISL1 on HeLa cell. [antibody concentration 10 μ g/ml]

Please note: All products are 'FOR RESEARCH USE ONLY. NOT FOR USE IN DIAGNOSTIC OR THERAPEUTIC PROCEDURES'.