

## ISL2 Antibody (monoclonal) (M03)

Mouse monoclonal antibody raised against a partial recombinant ISL2.

Catalog # AT2562a

### Product Information

---

<b>Application</b>	WB, E
<b>Primary Accession</b>	<a href="#">Q96A47</a>
<b>Other Accession</b>	<a href="#">NM_145805</a>
<b>Reactivity</b>	Human
<b>Host</b>	mouse
<b>Clonality</b>	monoclonal
<b>Isotype</b>	IgG2b Kappa
<b>Clone Names</b>	1D9
<b>Calculated MW</b>	39768

### Additional Information

---

<b>Gene ID</b>	64843
<b>Other Names</b>	Insulin gene enhancer protein ISL-2, Islet-2, ISL2
<b>Target/Specificity</b>	ISL2 (NP_665804.1, 261 a.a. ~ 358 a.a) partial recombinant protein with GST tag. MW of the GST tag alone is 26 KDa.
<b>Dilution</b>	WB~~1:500~1000 E~~N/A
<b>Format</b>	Clear, colorless solution in phosphate buffered saline, pH 7.2 .
<b>Storage</b>	Store at -20°C or lower. Aliquot to avoid repeated freezing and thawing.
<b>Precautions</b>	ISL2 Antibody (monoclonal) (M03) is for research use only and not for use in diagnostic or therapeutic procedures.

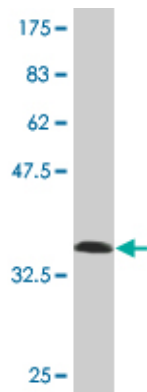
### References

---

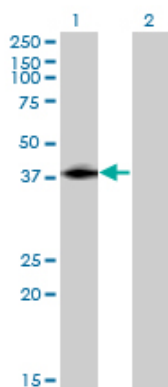
Cloning and expression of a novel human gene, Isl-2, encoded a LIM-homeodomain protein. Li Y, et al. Mol Biol Rep, 2007 Mar. PMID 17091338. The status, quality, and expansion of the NIH full-length cDNA project: the Mammalian Gene Collection (MGC). Gerhard DS, et al. Genome Res, 2004 Oct. PMID 15489334. Large-scale characterization of HeLa cell nuclear phosphoproteins. Beausoleil SA, et al. Proc Natl Acad Sci U S A, 2004 Aug 17. PMID 15302935. Complete sequencing and characterization of 21,243 full-length human cDNAs. Ota T, et al. Nat Genet, 2004 Jan. PMID 14702039. Generation and initial analysis of more than 15,000 full-length human and mouse cDNA sequences. Strausberg RL, et al. Proc Natl Acad Sci U S A, 2002 Dec 24. PMID 12477932.

### Images

---

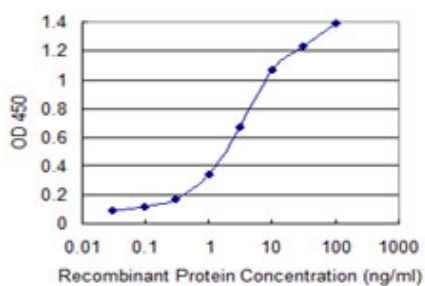


Antibody Reactive Against Recombinant Protein. Western Blot detection against Immunogen (36.52 KDa) .



Western Blot analysis of ISL2 expression in transfected 293T cell line by ISL2 monoclonal antibody (M03), clone 1D9.

Lane 1: ISL2 transfected lysate(39.8 KDa).  
Lane 2: Non-transfected lysate.



Detection limit for recombinant GST tagged ISL2 is 0.03 ng/ml as a capture antibody.

Please note: All products are 'FOR RESEARCH USE ONLY. NOT FOR USE IN DIAGNOSTIC OR THERAPEUTIC PROCEDURES'.