

ITGA2 Antibody (monoclonal) (M01)

Mouse monoclonal antibody raised against a partial recombinant ITGA2.

Catalog # AT2563a

Product Information

Application	WB, IF, E
Primary Accession	P17301
Other Accession	NM_002203
Reactivity	Human
Host	mouse
Clonality	monoclonal
Isotype	IgG1 Kappa
Clone Names	2B6
Calculated MW	129296

Additional Information

Gene ID	3673
Other Names	Integrin alpha-2, CD49 antigen-like family member B, Collagen receptor, Platelet membrane glycoprotein Ia, GPIa, VLA-2 subunit alpha, CD49b, ITGA2, CD49B
Target/Specificity	ITGA2 (NP_002194.2, 30 a.a. ~ 119 a.a) partial recombinant protein with GST tag. MW of the GST tag alone is 26 KDa.
Dilution	WB~~1:500~1000 IF~~1:50~200 E~~N/A
Format	Clear, colorless solution in phosphate buffered saline, pH 7.2 .
Storage	Store at -20°C or lower. Aliquot to avoid repeated freezing and thawing.
Precautions	ITGA2 Antibody (monoclonal) (M01) is for research use only and not for use in diagnostic or therapeutic procedures.

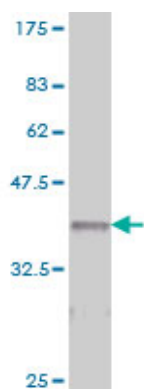
Background

This gene product belongs to the integrin alpha chain family. Integrins are heterodimeric integral membrane glycoproteins composed of a distinct alpha chain and a common beta chain. They are found on a wide variety of cell types including, T cells, fibroblasts and platelets. Integrins are involved in cell adhesion and also participate in cell-surface mediated signalling.

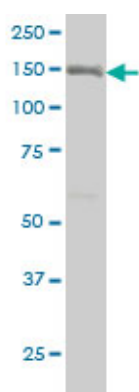
References

- 1.Identification and Characterization of the Integrin {alpha}2{beta}1 Binding Motif in Chondroadherin

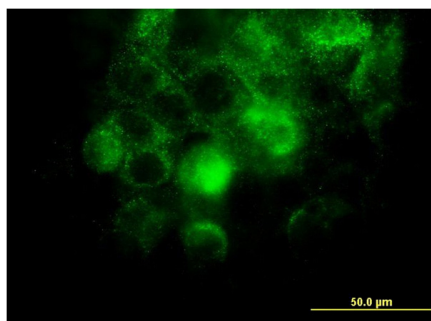
Images



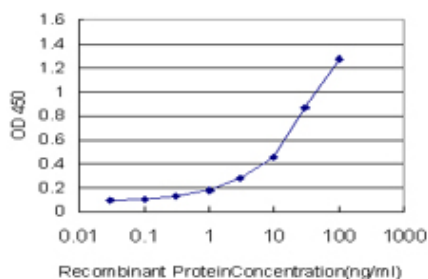
Antibody Reactive Against Recombinant Protein.Western Blot detection against Immunogen (35.53 KDa) .



ITGA2 monoclonal antibody (M01), clone 2B6 Western Blot analysis of ITGA2 expression in A-431 ((Cat # AT2563a)



Immunofluorescence of monoclonal antibody to ITGA2 on A-431 cell. [antibody concentration 10 ug/ml]



Detection limit for recombinant GST tagged ITGA2 is approximately 0.3ng/ml as a capture antibody.

Please note: All products are 'FOR RESEARCH USE ONLY. NOT FOR USE IN DIAGNOSTIC OR THERAPEUTIC PROCEDURES'.